



Gamybos pagrindas-  
surenkami frezuotų  
sienojų vasarnamiai,  
sodo nameliai, pavėsinės  
saunos, namai kempingams

#### SIENOJAI

Gaminamų vasarnamių sienų  
storiai 35 mm, 44 mm, 60 mm,  
70 mm ir 92 mm

#### MEDIENOS KOKYBĖ

Gamyboje naudojamas medis-  
egle ir pušis, tiekiami iš  
"Guodros medžio" pirminio  
medienos paruošimo cecho,  
esančio Rusijoje, Smolensko srityje

#### GRINDYS IR STOGAI

Grindų storis 22 mm, 32 mm  
stoginių lentų storis 19mm

#### LANGAI IR DURYS

Su stiklu arba stiklo paketu.  
Gamyboje naudojame "Roto"  
sistemą, kurios dėka langai  
varstosi dviem kryptim

#### MEDIENOS DRĖGMĖ

Pagrindinė žaliava-  
dvigubo pjūvimo lentos,  
džiovinamos konvekciniuose  
džiovinimo kamerosse  
iki 12%-14% drėgnumo

#### STOGO DANGA

Dengiama pagal kliento  
pageidavimus

# JŪSŲ POILSIUI MEDINIAI NAMAI



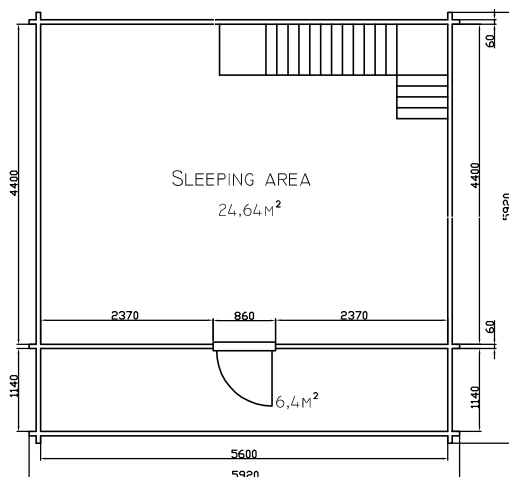
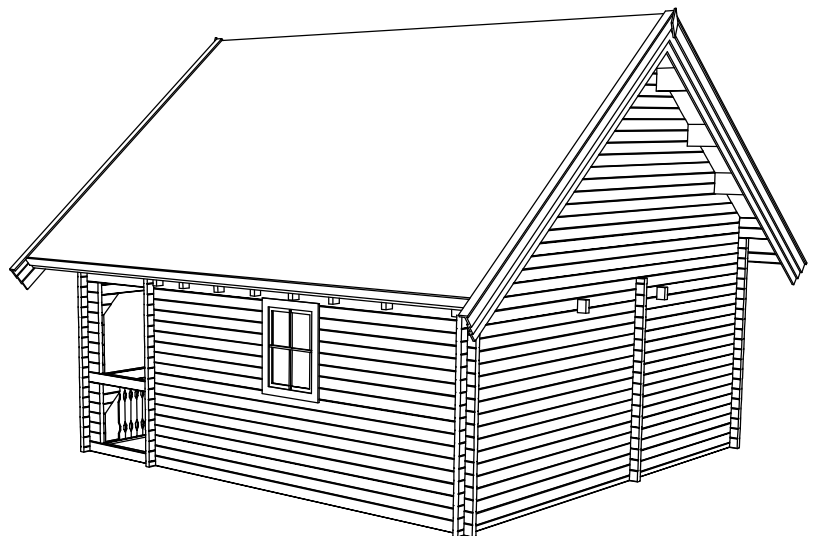
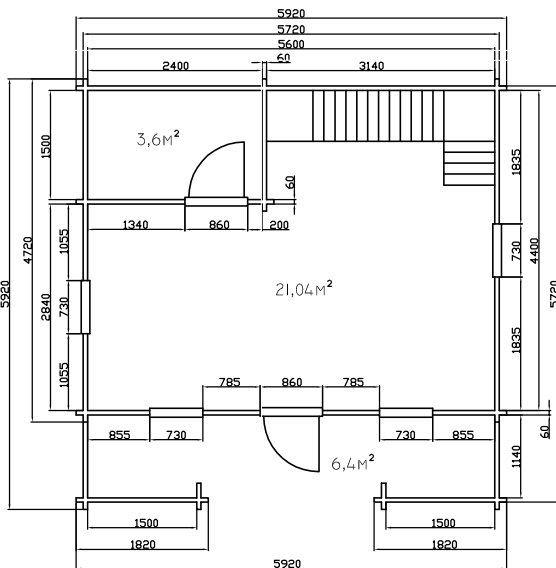
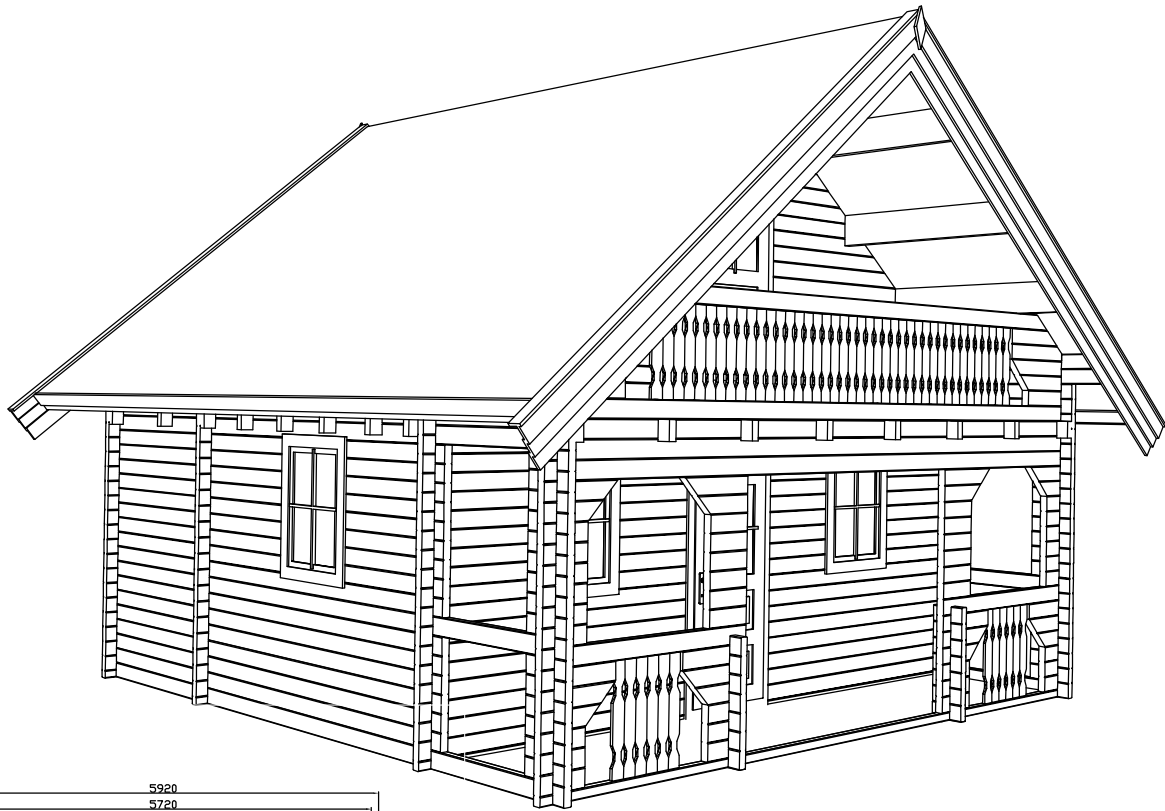
GAMINAME PAGAL TIPINIUS  
PROJEKTUS IR PAGAL  
INDIVIDUALIUS UŽSAKYMUS



KALVARIJOS 28d  
LT-3018  
KAUNAS  
LIETUVA  
TEL. +370 37 392835  
FAKS. +370 37 392884  
e-MAIL: info@guodrosmedis.lt  
www.guodrosmedis.lt



Blockhouses NB5644(60)v11, NB5644(70)v11



Garden houses 5.6\*4.4m + roof 1.4m, with veranda 1.14m, wall thicknes 60mm, with double plank profile, made from pine wood, dried until 10–12% humidity, without any painting and impregnation. 2 doors and 4 windows with glass packet, 1 door with glass.

Wall height: 3.00m

All height: 5.16m

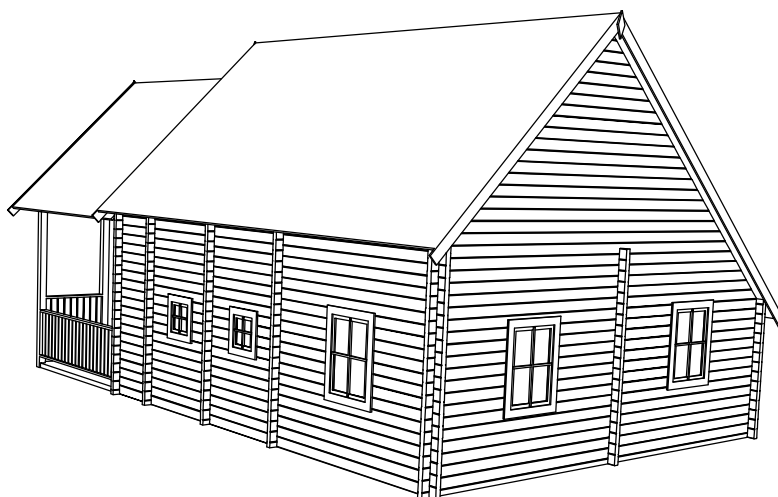
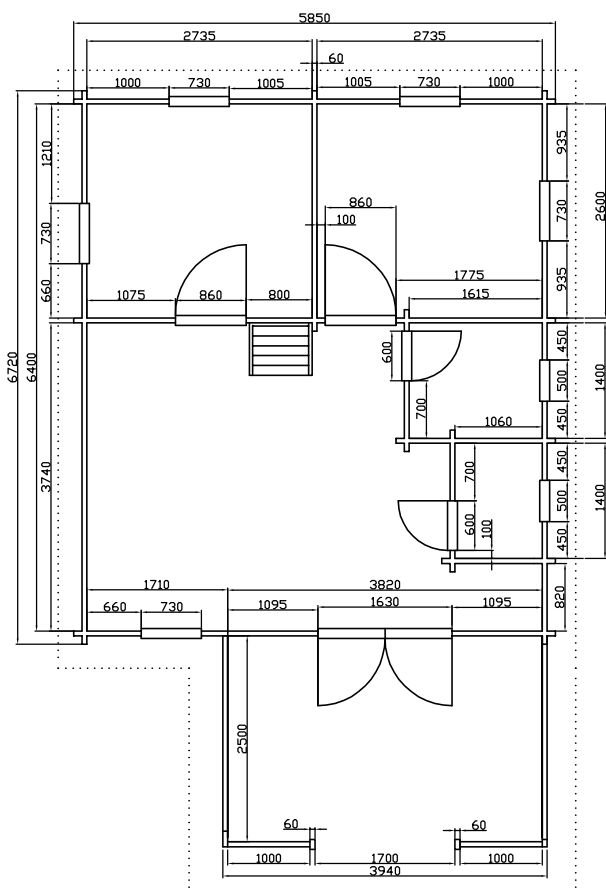
Area: 62.04m<sup>2</sup>.

Roof angle: 36°.

External dimensions: 5.92\*5.92m.

- floor planks 22mm,
- ground 140\*44mm
- roof planks 19mm,
- rafter 240\*60mm.

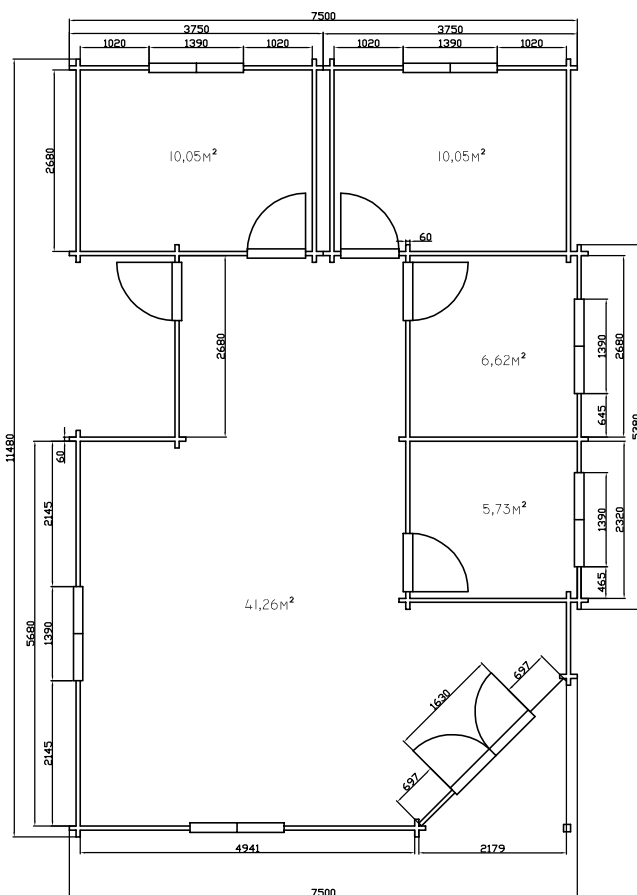
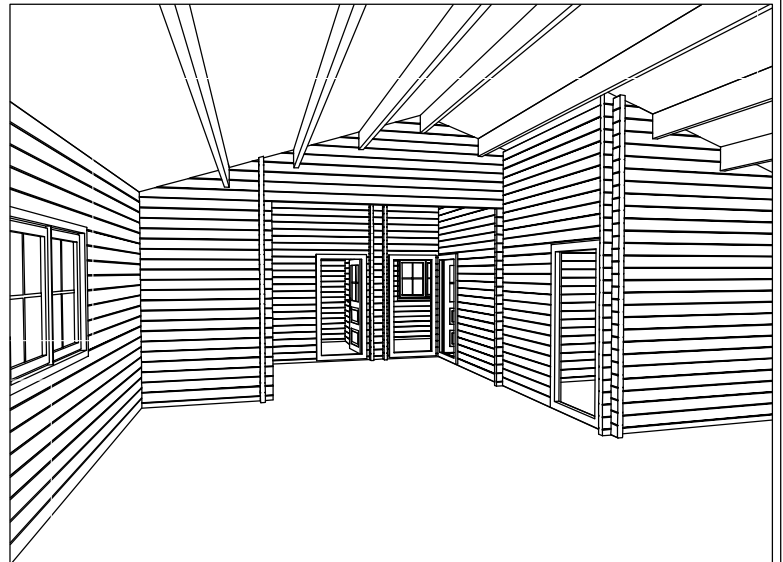
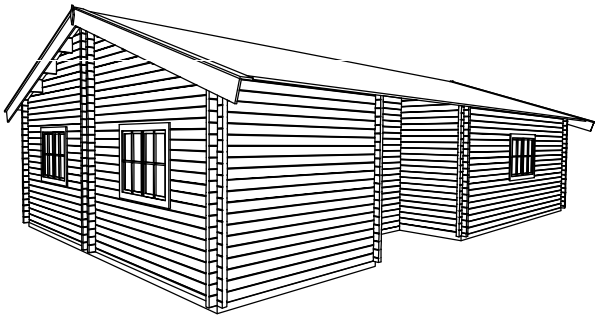
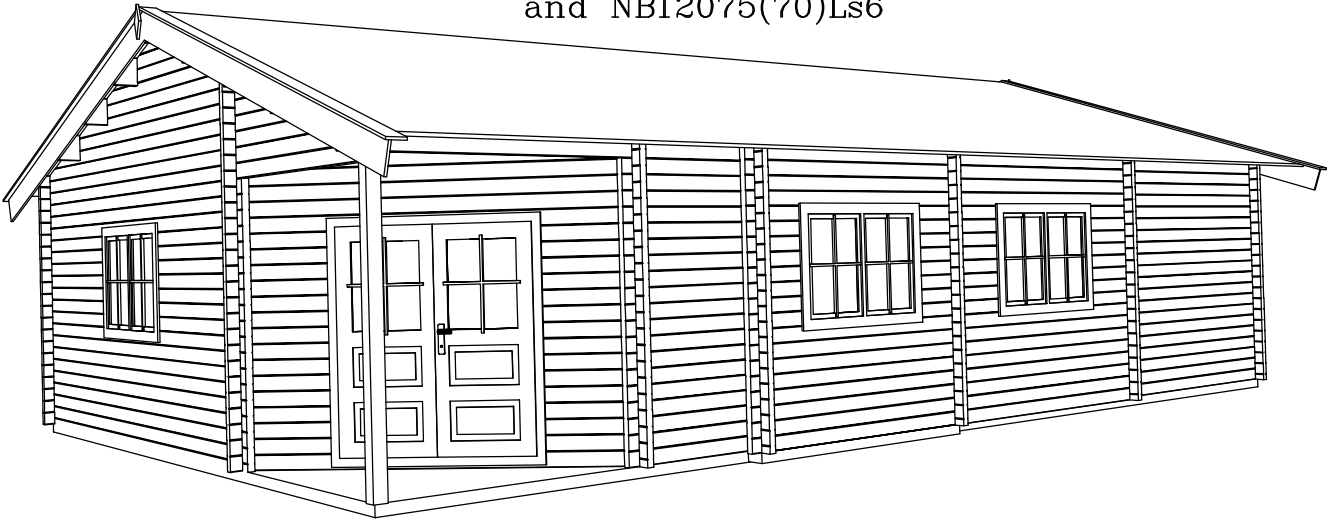
Houses NB5564(60)v25, NB5564(70)v25



Garden houses 5.53\*6.4m + roof 0.3m,  
with veranda 2.5m, wall thicknes 60, 70mm,  
double door with glass packet, 4 doors with  
glass, 5 windows with glass packet 3 small  
windows with glass packet.  
External dimensions: 5.85\*9.2m.  
First floor 35m<sup>2</sup>, second floor 14,4m<sup>2</sup>, veranda 9,6m<sup>2</sup>  
Inside area: 59m<sup>2</sup>  
Roof angle 45°  
Wall with double plank profile, made from pine  
wood, dried until 10–12% humidity,  
without any painting and impregnation.

- floor planks 22mm, 32mm,
- ground 140\*50, 70\*50mm,
- roof planks 19mm,
- rafter 250\*60mm.

Houses NB12075(60)Ls6  
and NB12075(70)Ls6

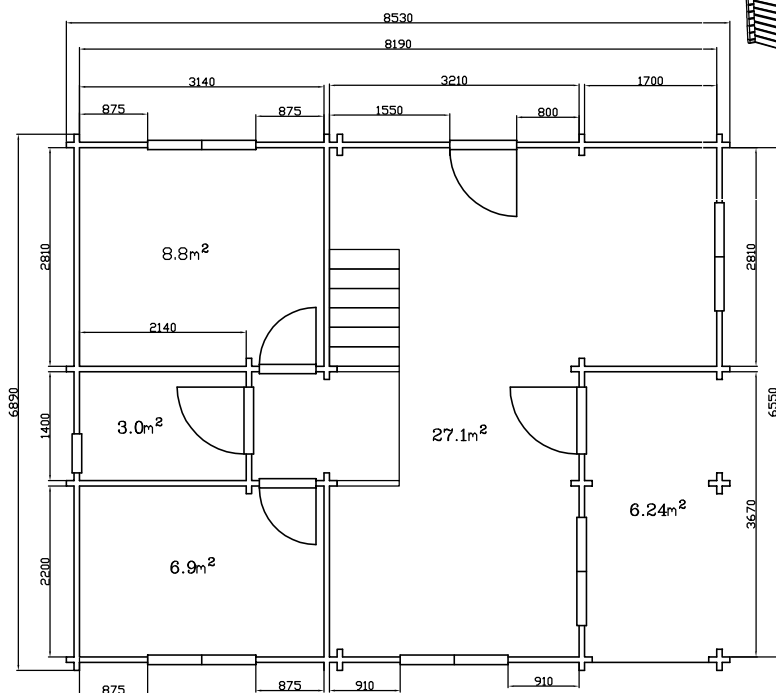
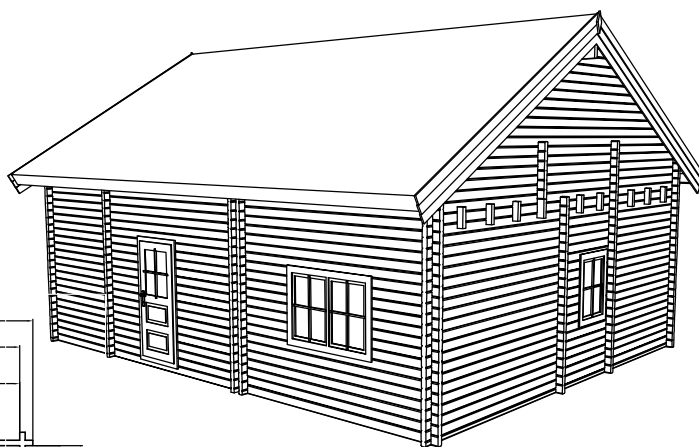
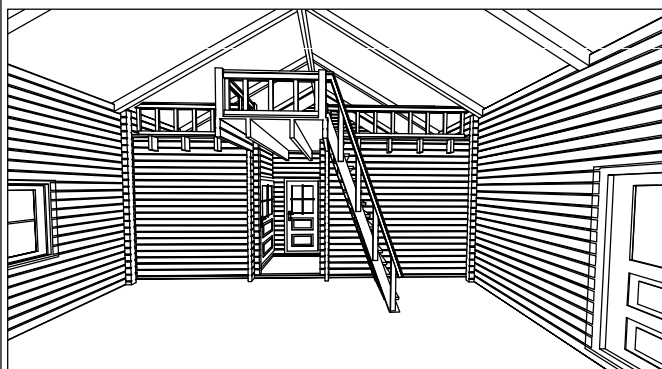
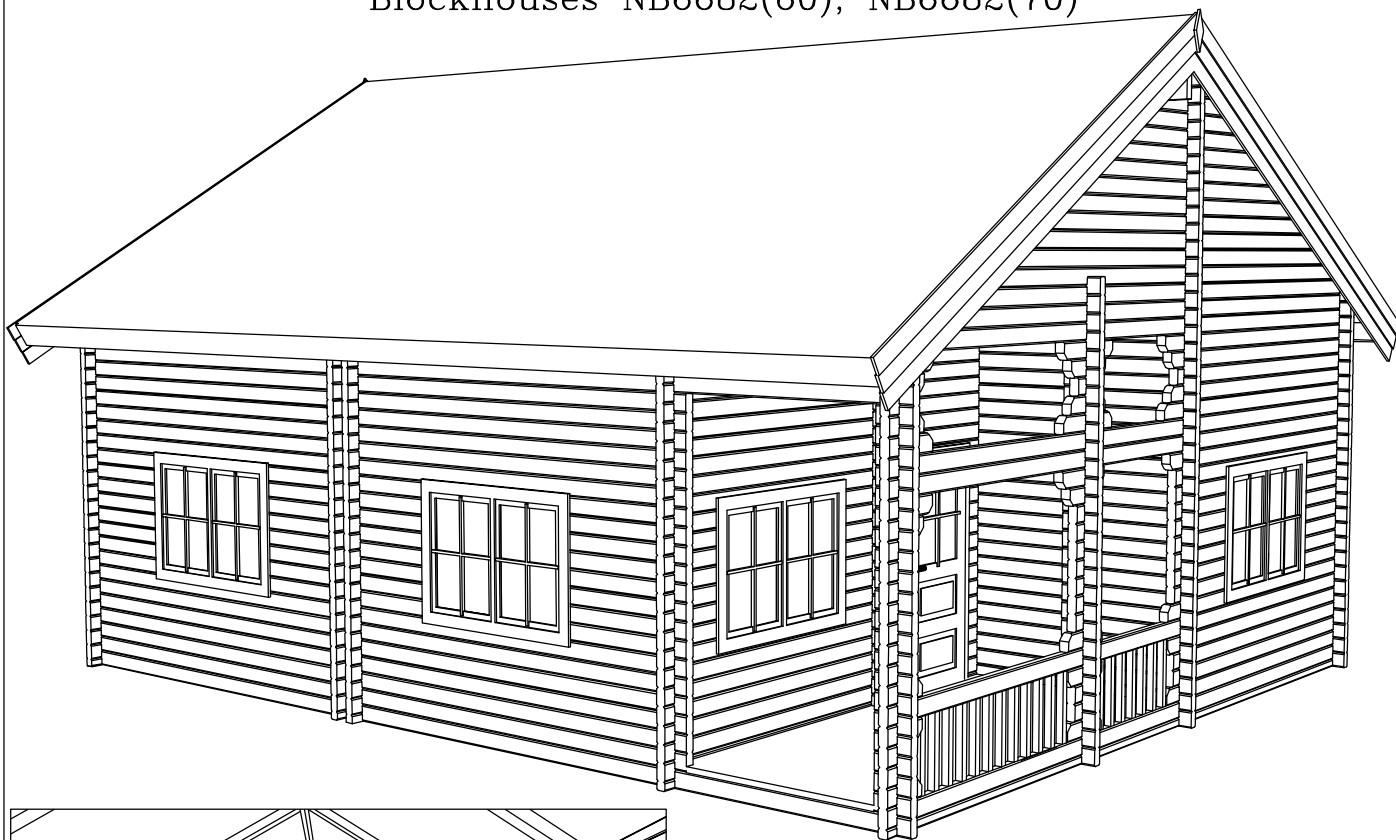


Houses 11.16\*7.18m + roof 0.6m without veranda, wall thickness 60, 70mm with double plank profile, made from pine wood, dried until 10–12% humidity, without any painting and impregnation.

Double door with glass packet, door with glass packet, 4 doors with glass, 6 double windows with glass packet.  
External dimensions: 7.66\*11.48m.  
Wall height: 2.56m.  
All height: 3.81m.  
Area: 73.7m<sup>2</sup>  
Roof angle 22°.

– floor planks 22mm  
– ground 140\*50, 70\*50mm,  
– roof planks 19mm,  
– rafter 250\*60mm.

Blockhouses NB6682(60), NB6682(70)



Garden houses 6.55\*8.19m  
with double plank profile, made from pine wood,  
dried until 10–12% humidity,  
without any painting and impregnation.

Wall thickness 60mm,70mm, outside door with  
glass packet, internal doors with glass,  
windows with glass packet.

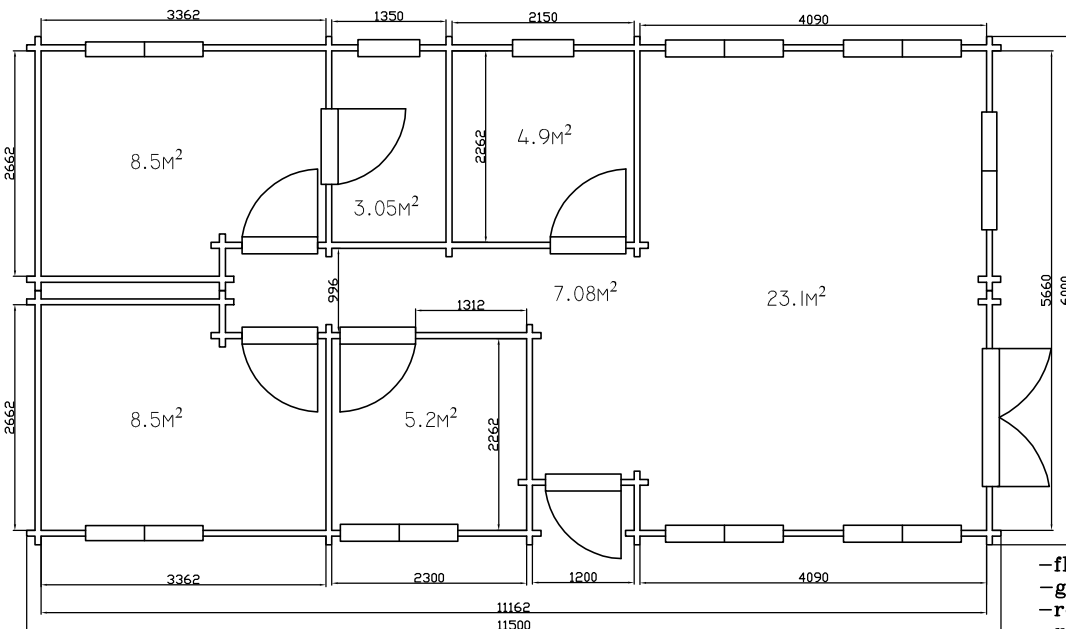
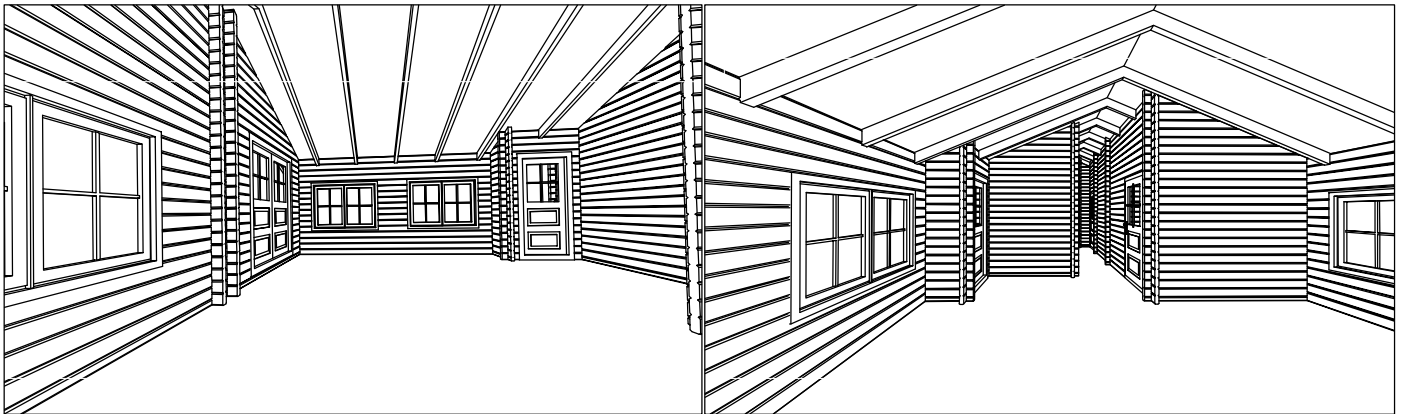
External dimensions: 6.89\*8.53m.  
First floor 45.8m<sup>2</sup>, second floor 21m<sup>2</sup>,  
veranda 6.24m<sup>2</sup>. Inside area: 73.04m<sup>2</sup>.  
Roof angle 30°.

-floor planks 22mm  
-ground 140\*50, 70\*50mm,  
-roof planks 19mm,  
-rafter 140\*60mm.

Wall height 3.25m  
All height 5.23m



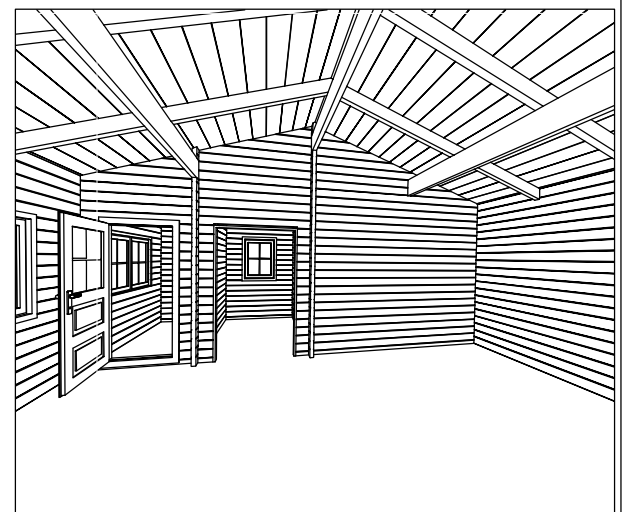
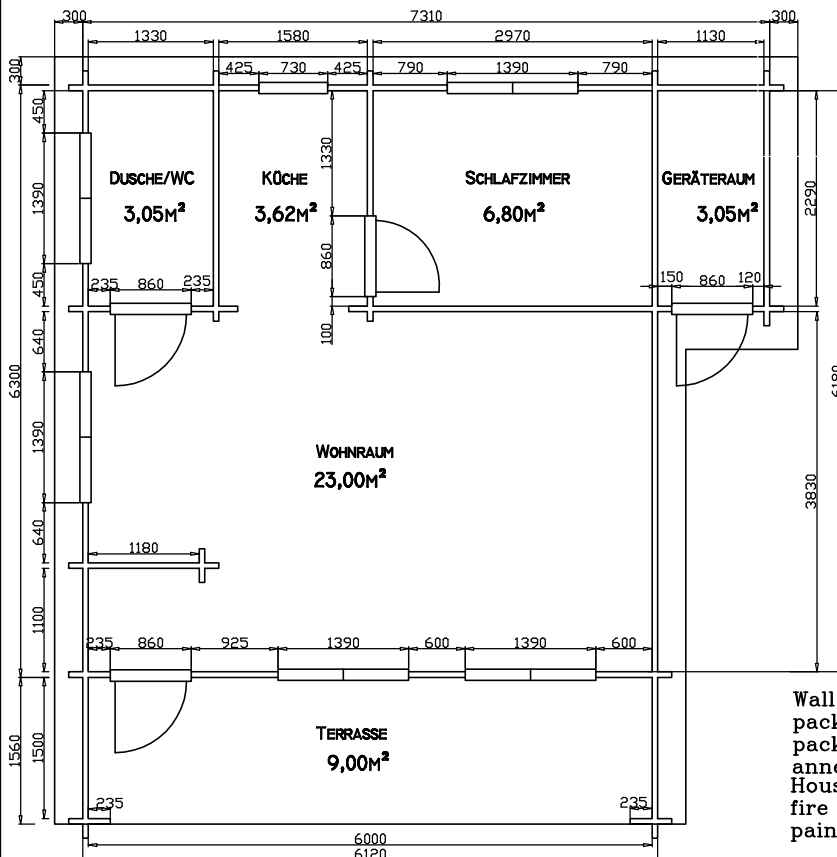
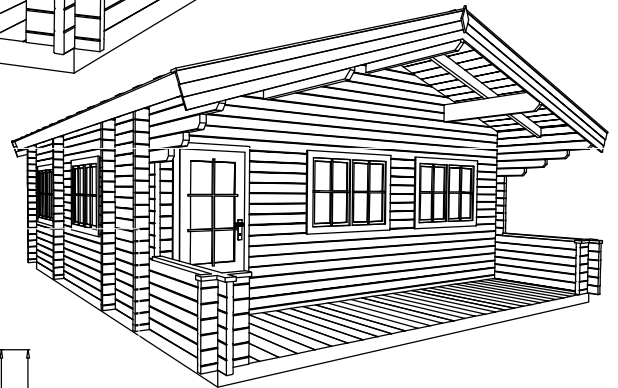
NB11156(44), NB11156(60), NB11156(70)



Garden houses 11.19\*5.67m with double plank profile, made from pine wood, dried until 10–12% humidity, without any painting and impregnation.  
Wall thickness 44, 60, 70mm, double door with glass packet, door with glass packet, internal doors with glass, windows with glass packet.  
Outside area: 65.5m<sup>2</sup>

- floor planks 22mm, 32mm,
- ground 140\*50, 70\*50mm,
- roof planks 19mm,
- rafter 200\*60mm.

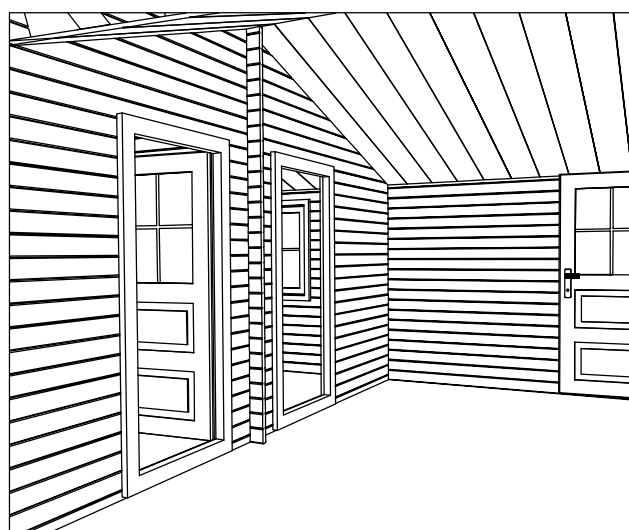
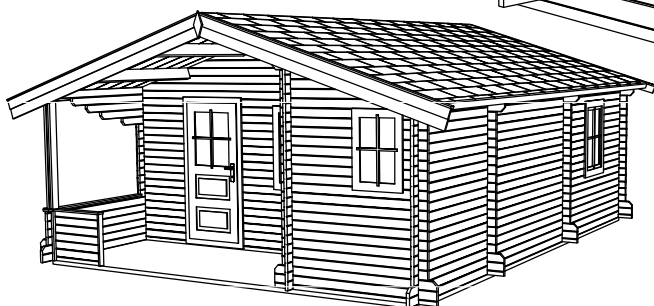
NB6062(60)v15pb11 WIARD  
NB6062(70)v15pb11 WIARD



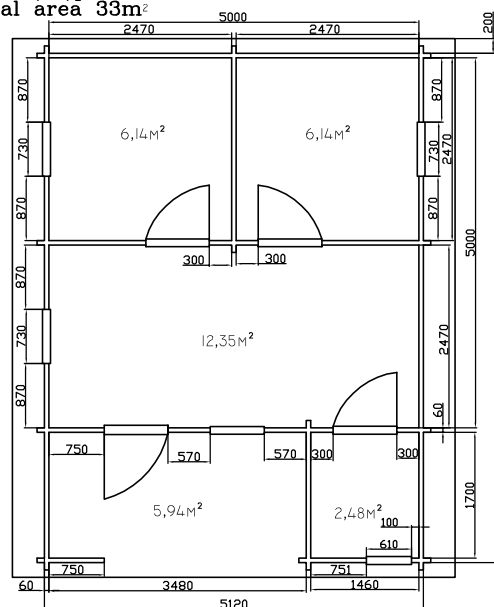
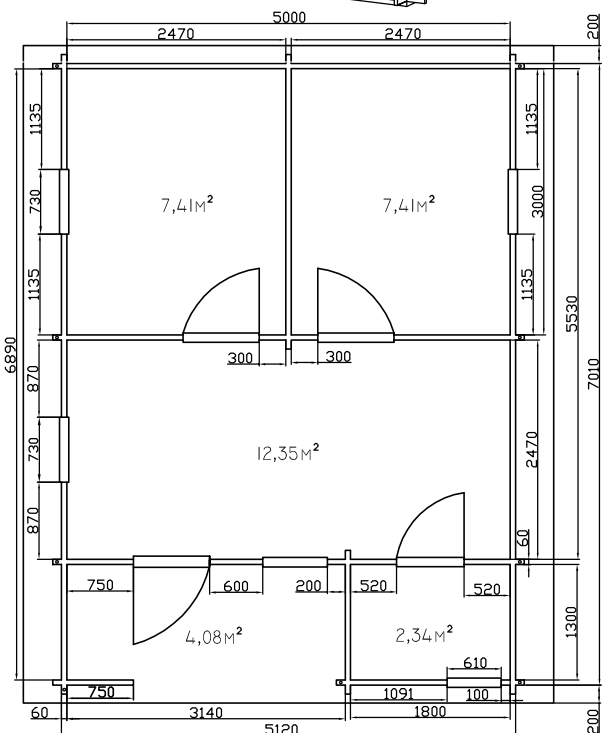
Wall thickness 60 or 70mm, outside door with glass packet, internal doors with glass, windows with glass packet. Internal dimensions: 6.00\*6.18m + veranda 1.5m+ annex 1.13\*2.29m. Total area 48m<sup>2</sup>. Houses with double plank profile, made from pine or fire wood, dried until 10-12% humidity, without any painting and impregnation.

- floor planks 22mm,
  - ground 140\*60mm
  - roof planks 19mm,
  - rafter 240\*60, 140\*60mm.
- Wall height 2.50m  
All height 3.50m

NB5055(44)pb13 Litva  
NB5055(60)pb13 Litva



Other modifications:  
NB5050(60)pb17-3  
Total area 33m<sup>2</sup>



Wall thickness 44 or 60mm, outside door with glass packet(60mm), internal doors with glass, windows with glass packet(60mm). Internal dimensions: 5.00\*5.53m + annex 1.80\*1.30m. Double roof. Total area 34m<sup>2</sup>.

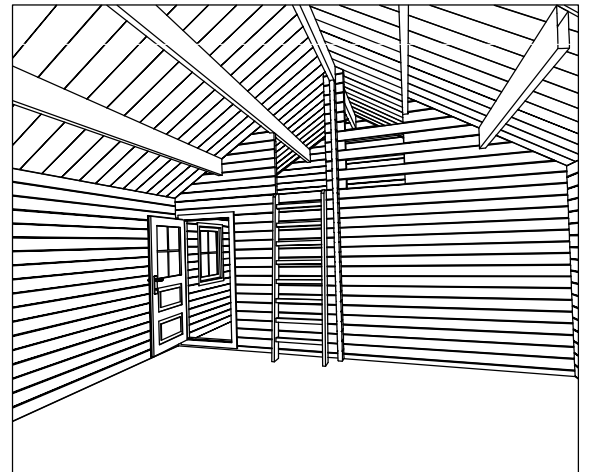
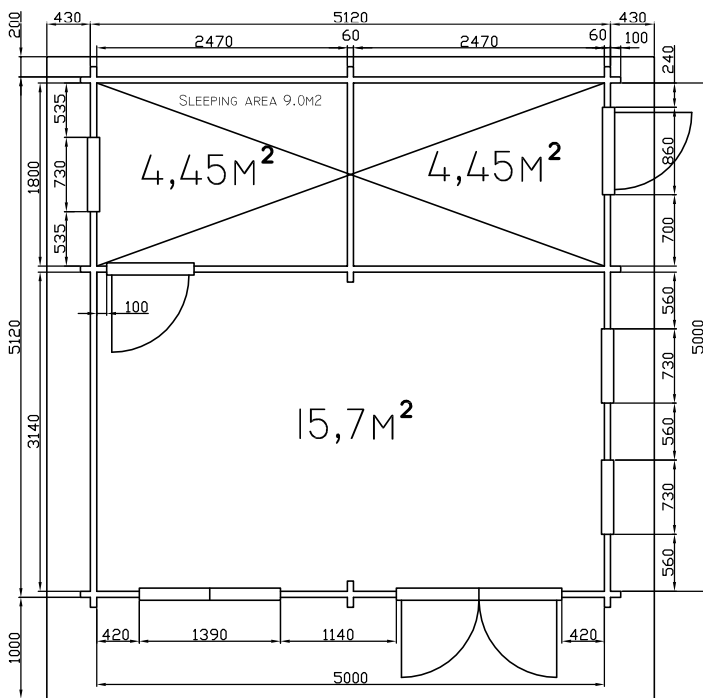
Houses with double plank profile, made from pine or fire wood, dried until 10-12% humidity, without any painting and impregnation.

- floor planks 22mm,
- ground 70\*60mm
- roof planks 19+19mm,
- rafter 190\*60mm

Wall height 2.50m  
All height 3.32m



NB5050(60) BERLIN  
NB5050(70) BERLIN



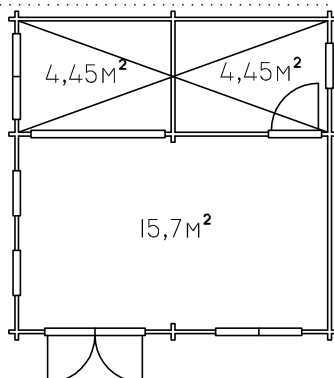
Wall thickness 60 or 70mm, outside door with glass packet, internal doors with glass, windows with glass packet. Internal dimensions: 5.00\*5.00m + sleeping area 5.00\*1.80m. Total area 34m<sup>2</sup>

Houses with double plank profile, made from pine or fire wood, dried until 10–12% humidity, without any painting and impregnation.

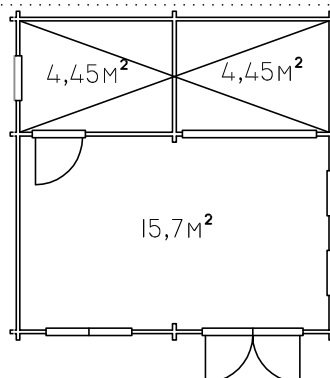
- floor planks 22mm,
- rafter 70\*60mm
- roof planks 19mm,
- ground 190\*60mm

Wall height 2.50m  
All height 3.81m

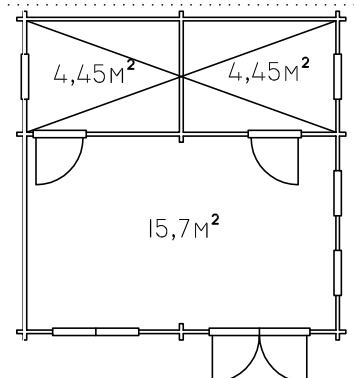
NB5050(60) BERLIN Extra



NB5050(60) BERLIN Extra1



NB5050(60) BERLIN Extra2



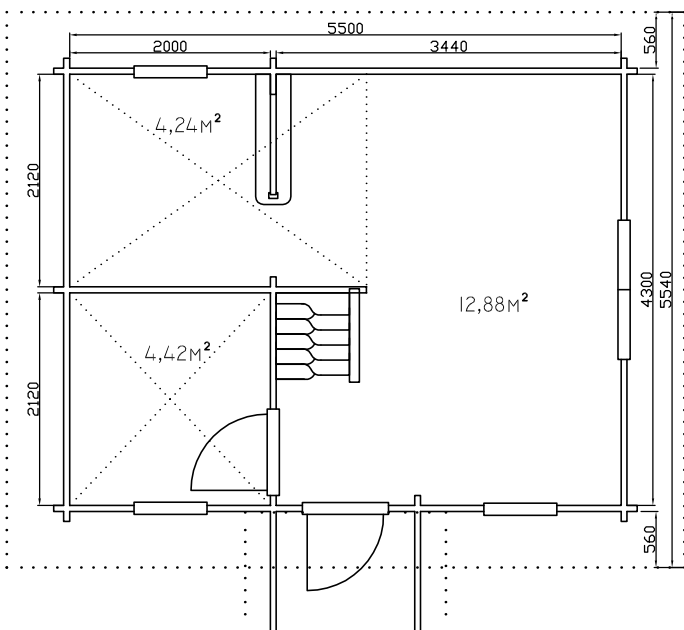
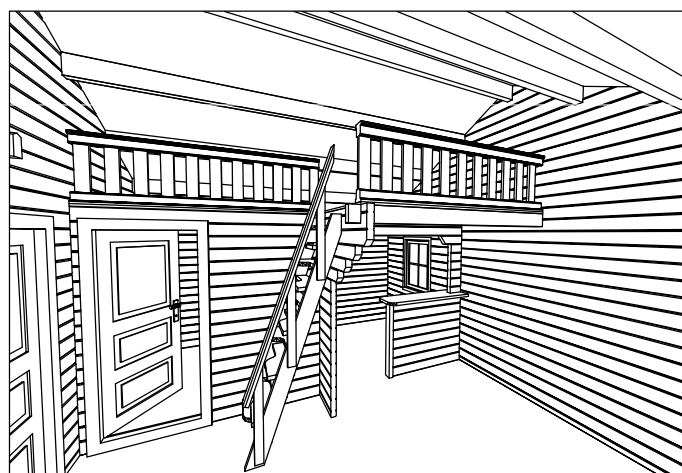
Garden house NB5543(44), NB5543(60), NB5543(70)



3.76

2.25

0.00



Garden house 5.50\*4.30 m + roof 0.56 m, wall thickness 60 and 70mm, made from pine or fir tree wood, dried until 10–12% humidity, with double plank profile, without any painting and impregnation. 3 single windows and 1 double window with glass packet and shutters, with 2 wood doors.

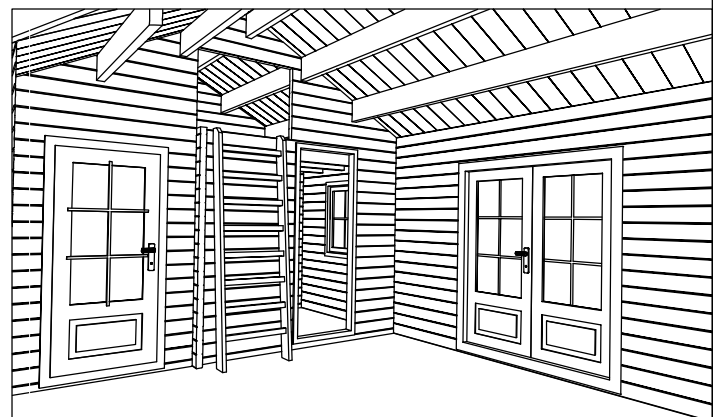
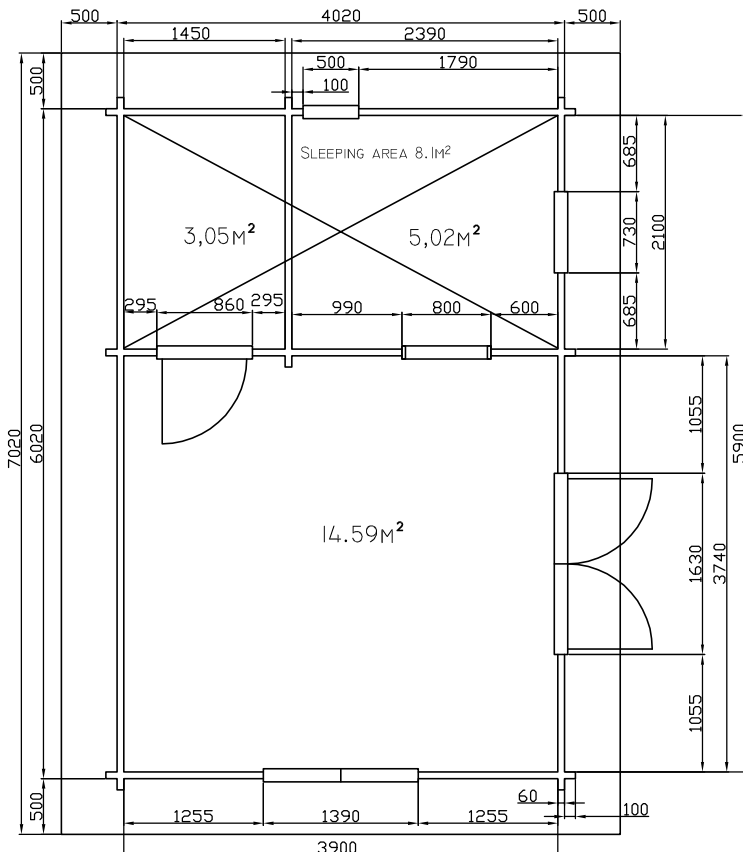
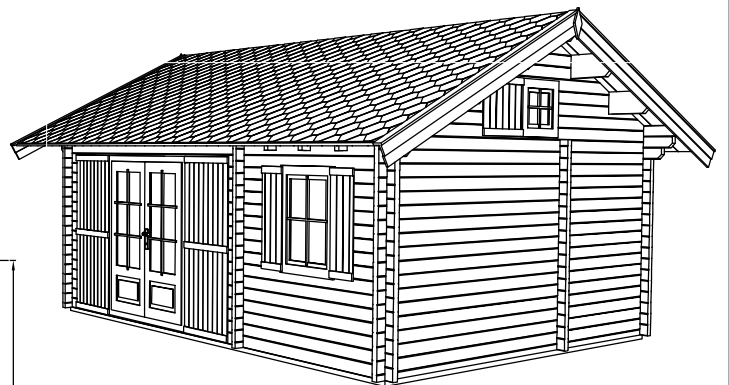
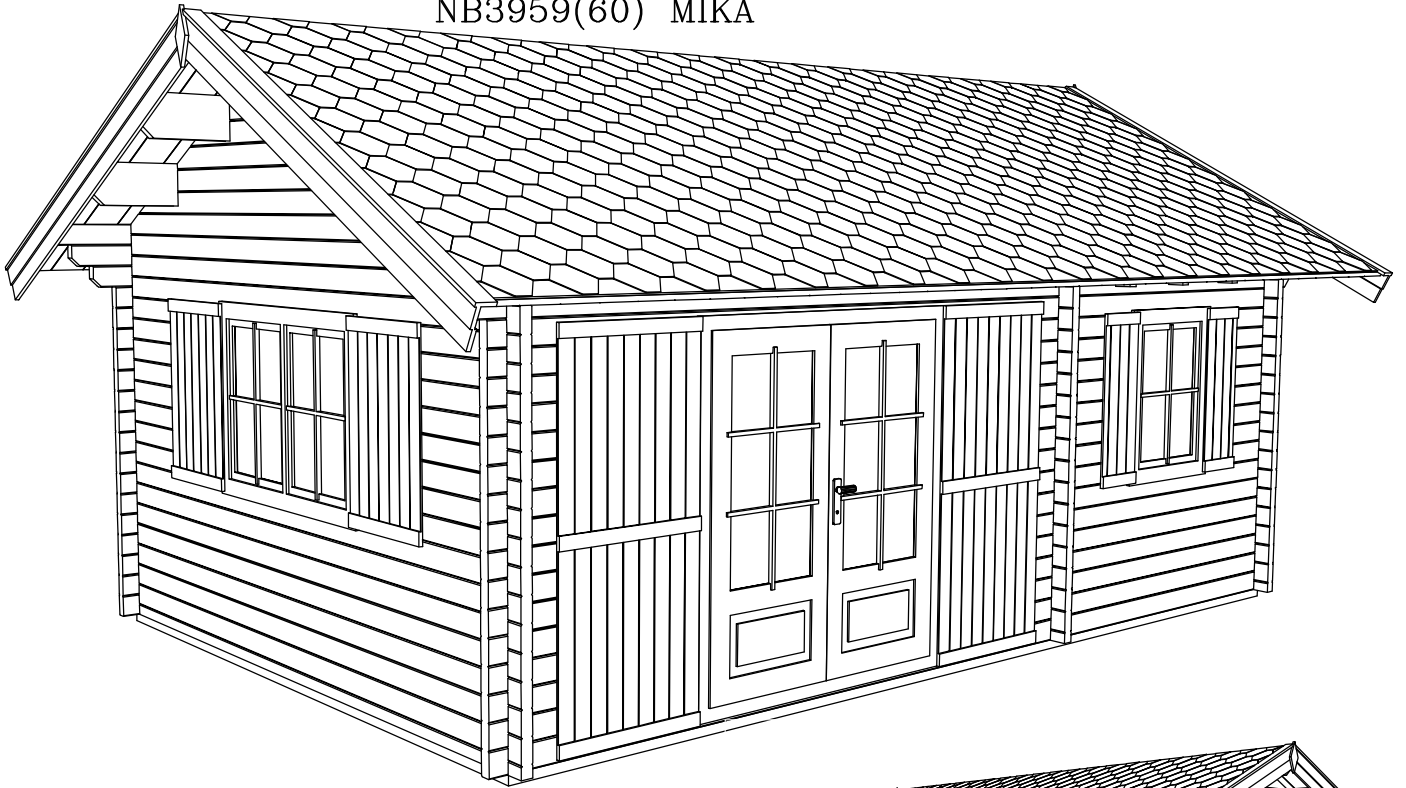
Other technical data:

- floor planks 22 mm
  - underground 140\*60,70\*60 mm
  - roof planks 19 mm
  - rafter 60\*180, 60\*140 mm
  - sleeping place 2.12\*2.06m and 2.18\*3.26m
- First floor 23.36m<sup>2</sup>, second floor 11.5m<sup>2</sup>. Area 32.9m<sup>2</sup>





NB3959(44) MIKA  
NB3959(60) MIKA

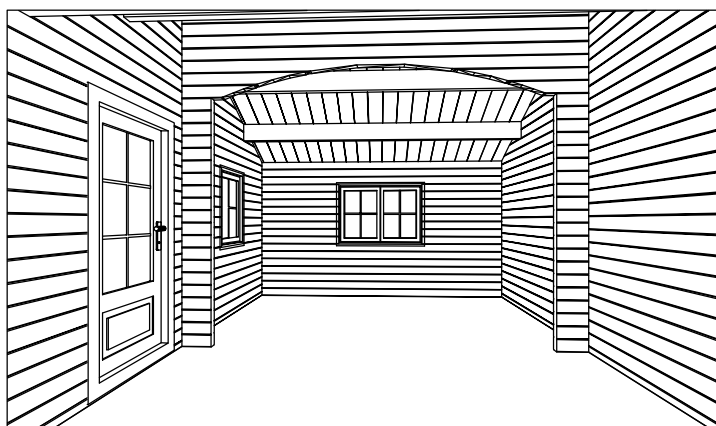
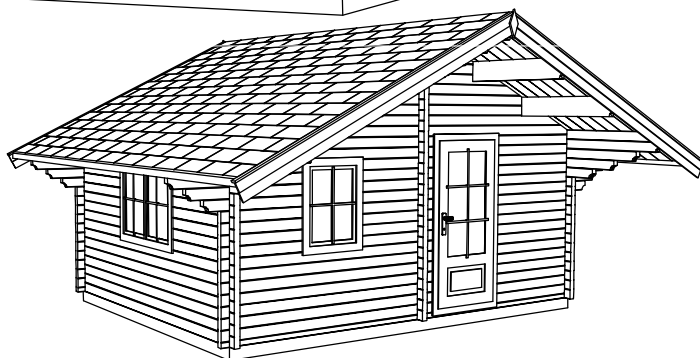
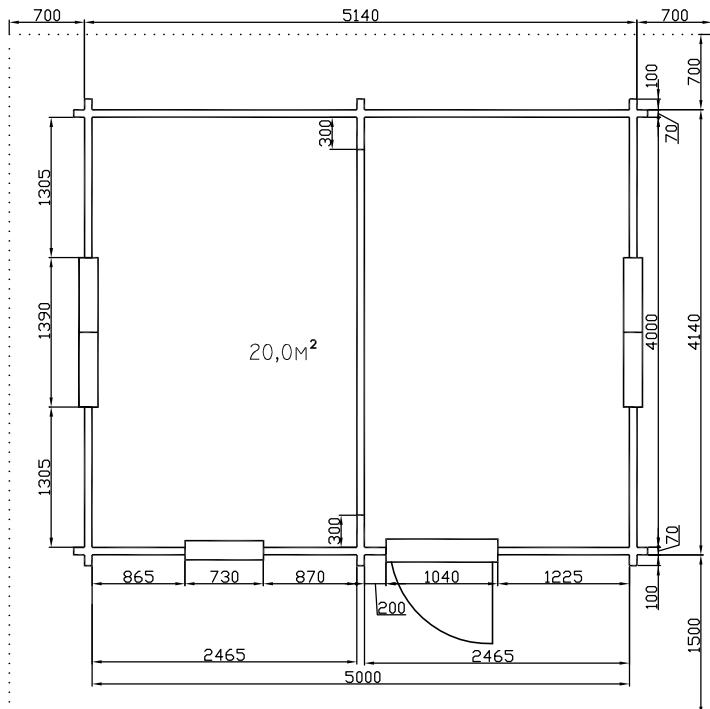
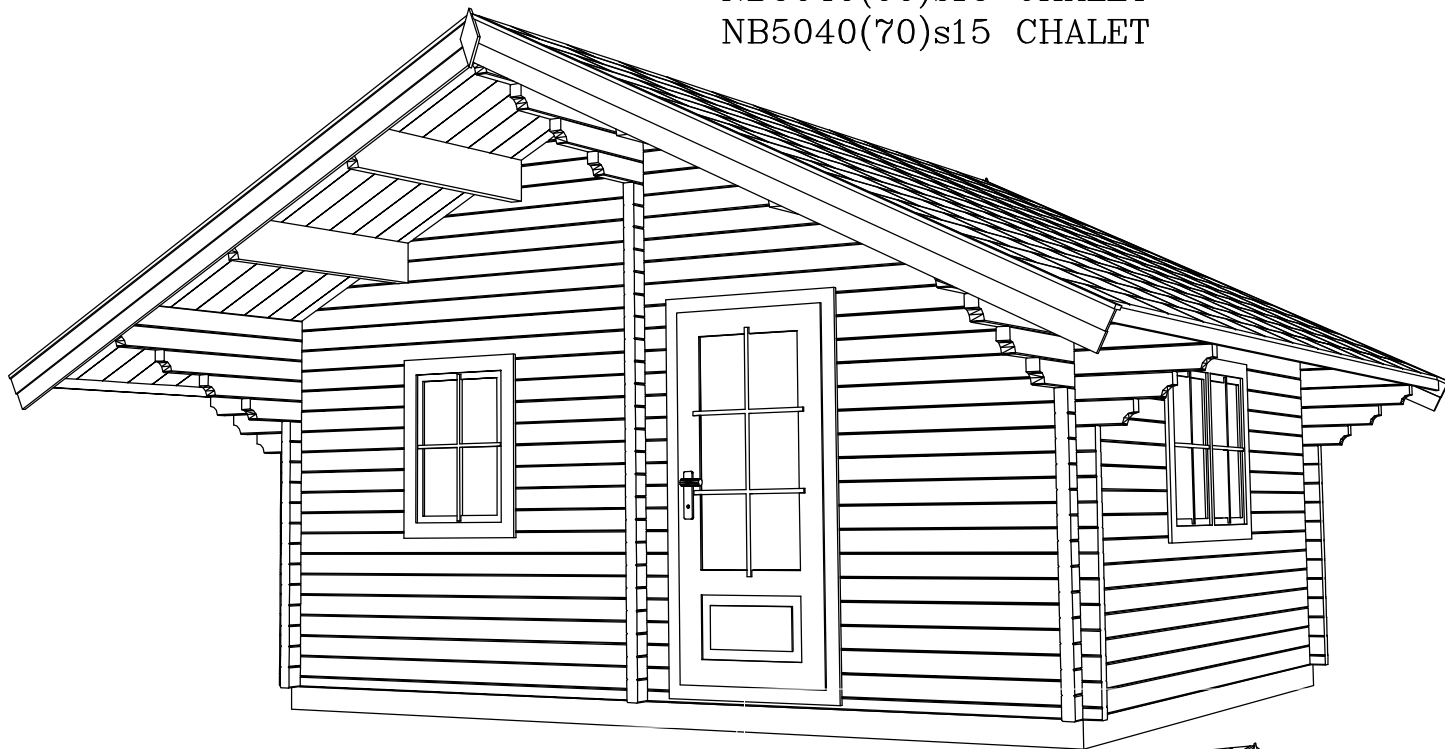


Wall thickness 44 or 60mm, outside door with glass packet, internal doors with glass, windows with glass packet. Internal dimensions: 3.90\*5.90m. Total area 32m<sup>2</sup>  
Houses with double plank profile, made from pine or fire wood, dried until 10-12% humidity, without any painting and impregnation.

- floor planks 22mm,
- ground 140\*44, 70\*44mm,
- roof planks 19mm,
- rafter 240\*60mm.

Wall height 2.35m  
All height 3.38m

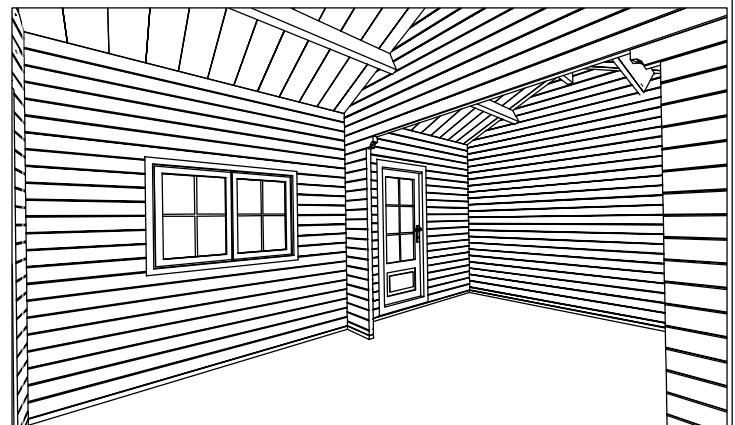
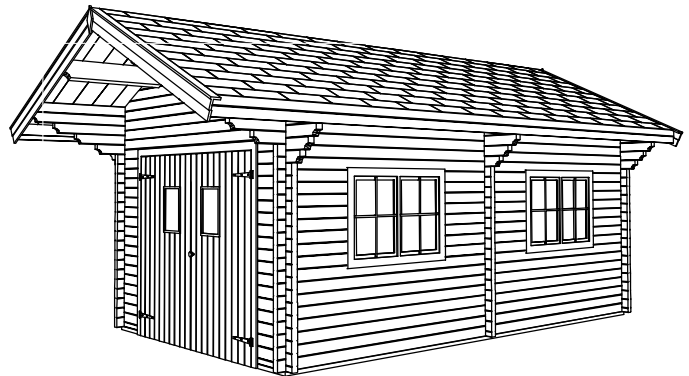
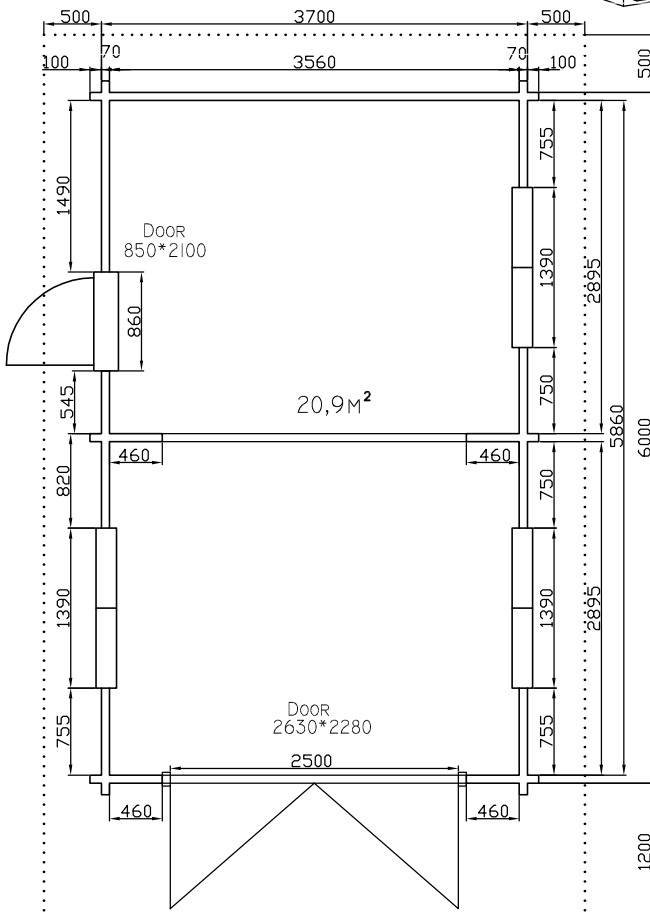
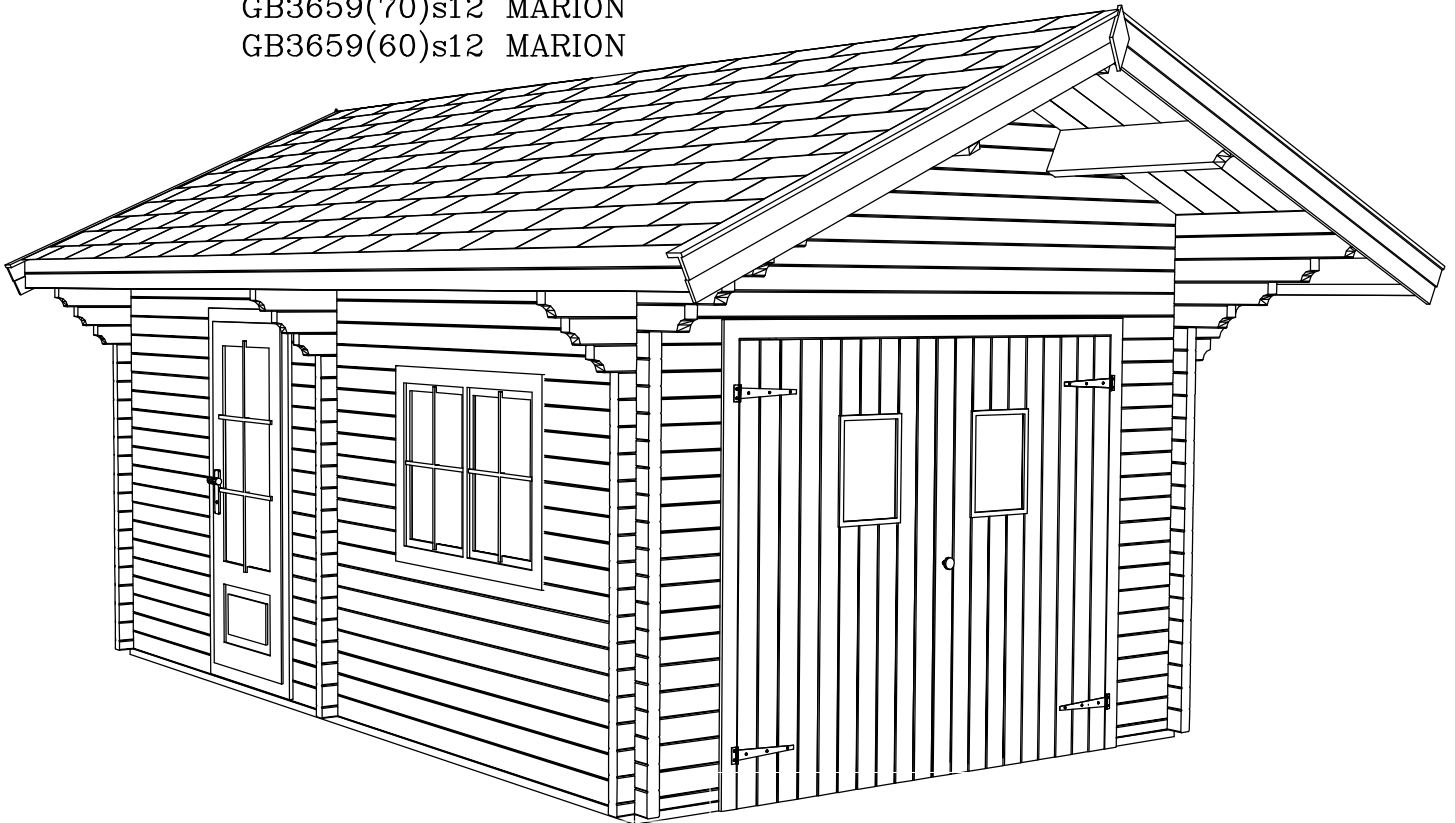
NB5040(60)s15 CHALET  
NB5040(70)s15 CHALET



Wall thickness 60 or 70mm, door and windows with glass packet. Internal dimensions: 5.00\*4.00m Inside area 20m<sup>2</sup>  
Houses with double plank profile, made from pine or fire wood, dried until 10–12% humidity, without any painting and impregnation.

–floor planks 22mm,  
–ground 140\*100, 140\*44mm  
–roof planks 19mm,  
–rafter 240\*60mm  
Wall height 2.25m  
All height 3.50m  
Door height and width 2.1\*1m

GB3659(70)s12 MARION  
GB3659(60)s12 MARION



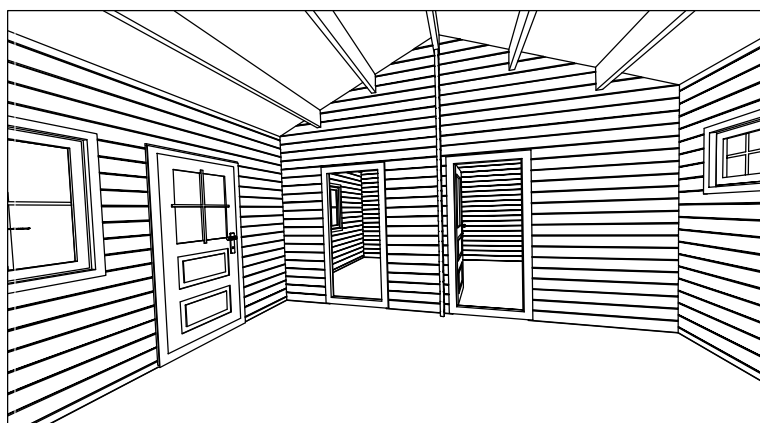
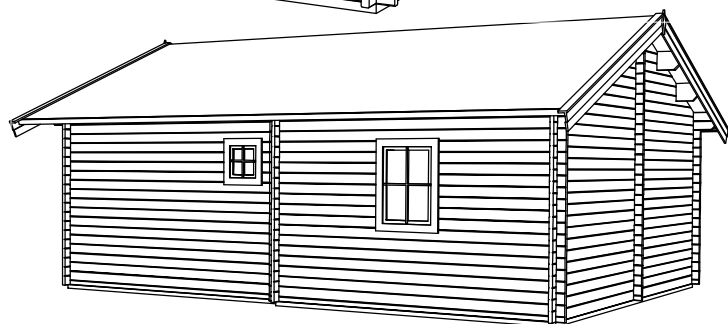
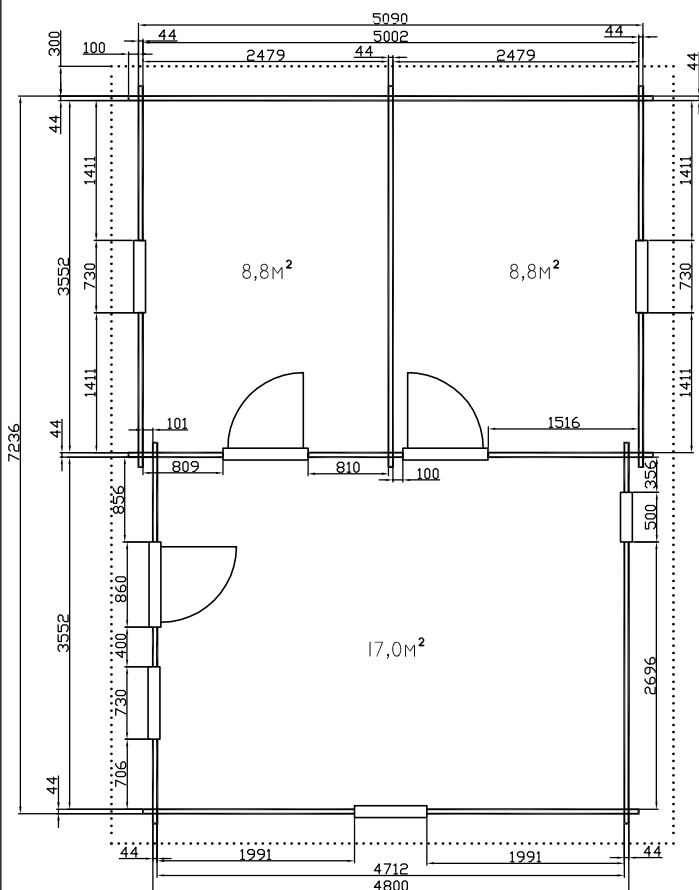
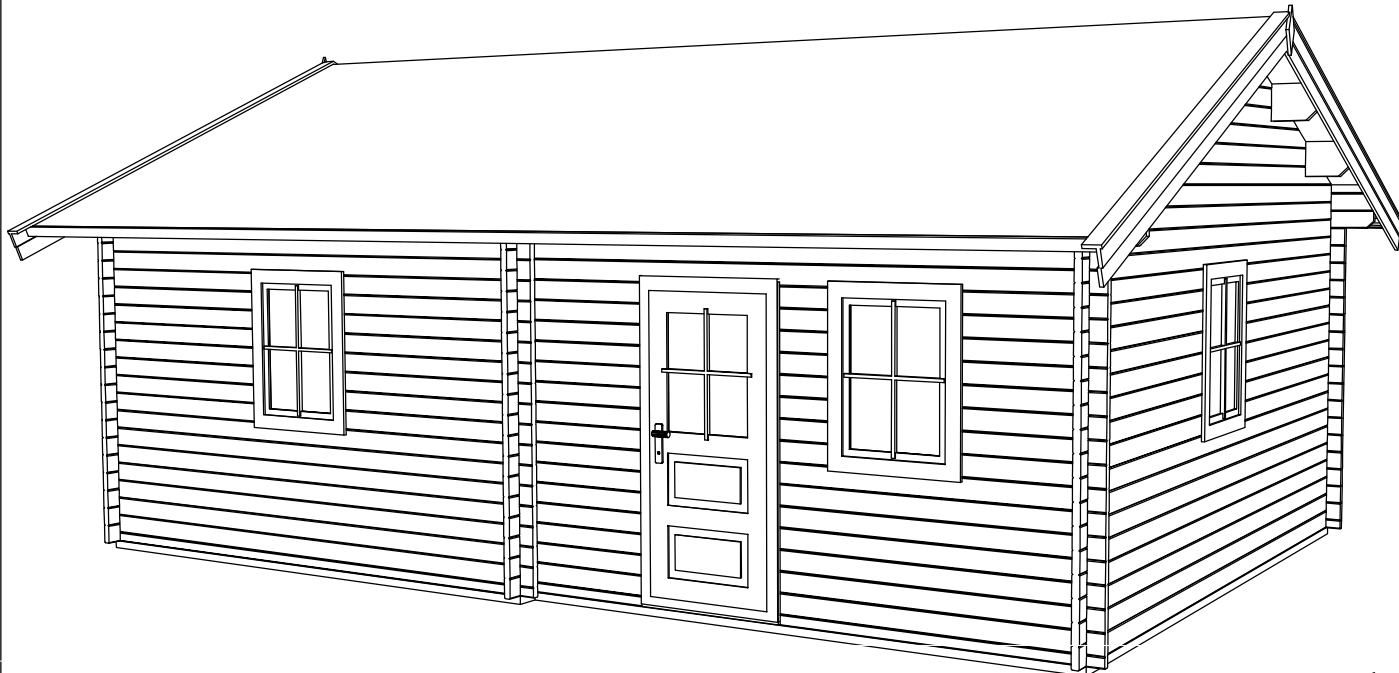
Wall thickness 60 or 70mm, door and windows with glass packet. Internal dimensions: 3.56\*5.86m Inside area 20.9m<sup>2</sup>  
Houses with double plank profile, made from pine or fire wood, dried until 10–12% humidity, without any painting and impregnation.

–ground 70\*44mm  
–roof planks 19mm,  
–rafter 240\*60mm

Wall height 2.88m  
All height 3.70m  
Door height and width 2.1\*0.86m  
Hole of garage door 2.5\*2.2m



Blockhouses NB5172(44) Aurich, NB5172(60) Aurich



Block houses 5.0\*7.2m + roof 0.3m, wall thicknes 44,60mm, with double plank profile, made from pine wood, dried until 10-12% humidity, without any painting and impregnation. 3 doors and 5 windows with glass.

Wall height: 2.50m

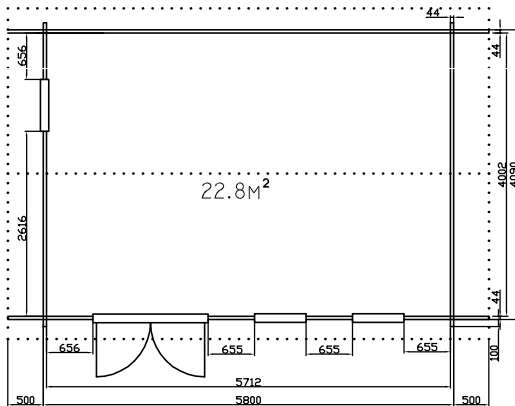
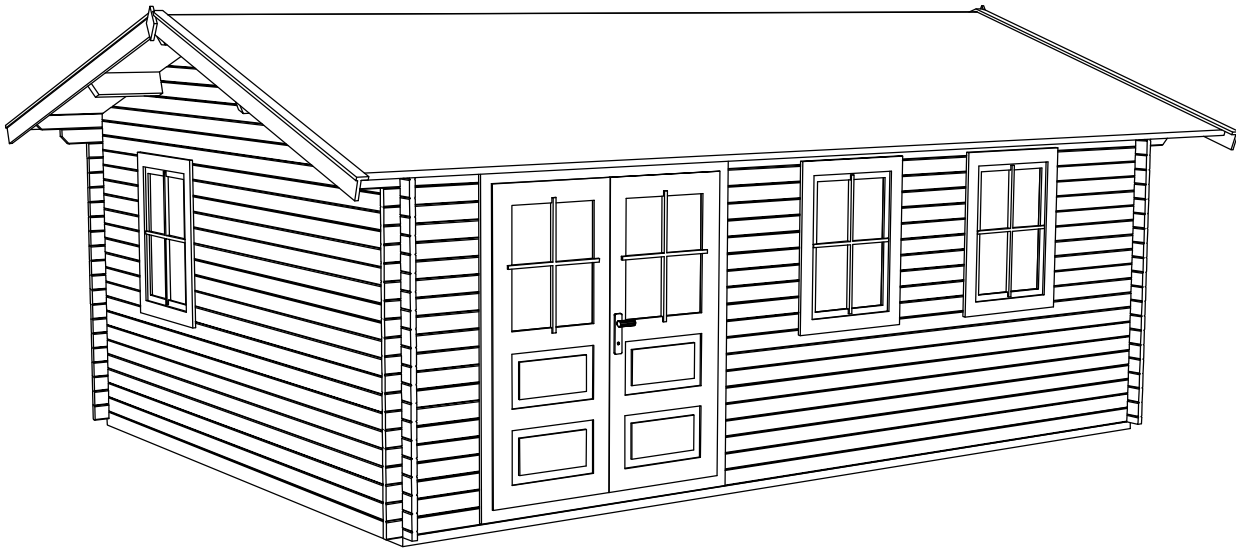
All height: 3.50m

Area: 34.6m<sup>2</sup>.

External dimensions: 5.09\*7.24m.

- floor planks 22mm,
- ground 140\*44, 70\*44mm
- roof planks 19mm,
- rafter 240\*60mm.

NB4057(44)Ls5-S Fextra



Garden house 4,00\*5,70m(22.8m<sup>2</sup>) + roof 0,50m. Wall thickness 44mm with double plank profile from pine or fir wood. All wooden constructions are dried until 10-12%, without painting and impregnation. Door with glass and lock, windows with glass with simple opening system.

Other technical data:

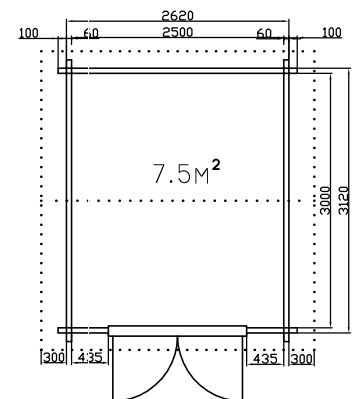
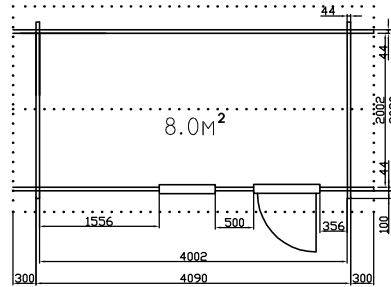
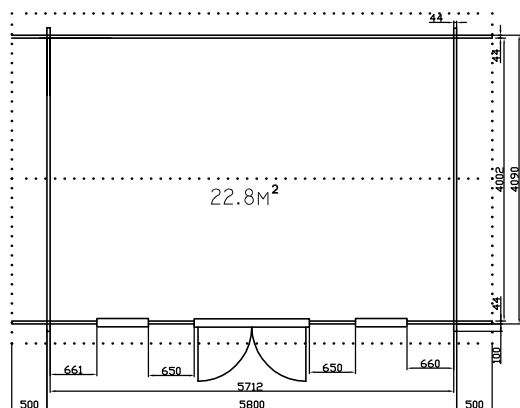
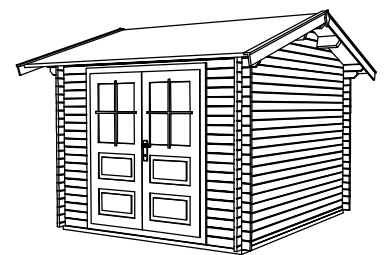
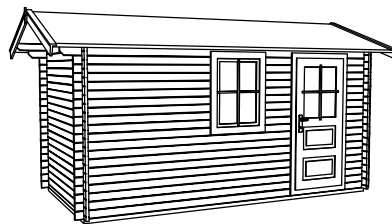
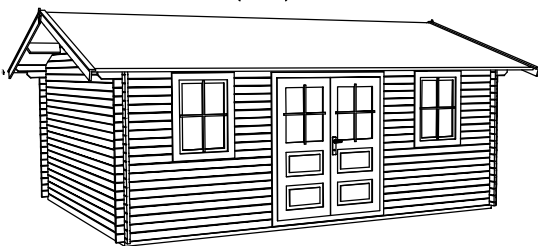
-floor planks	22mm
-underground	100*40, 50*40mm
-roof planks	19+19mm
-rafter	240*60mm

Wall height: 2.19m  
House height: 2,84m

NB4057(44)Ls5-S Fextra1

NB2040(44)s3-S Fextra

NB3025(60)Ls3-S

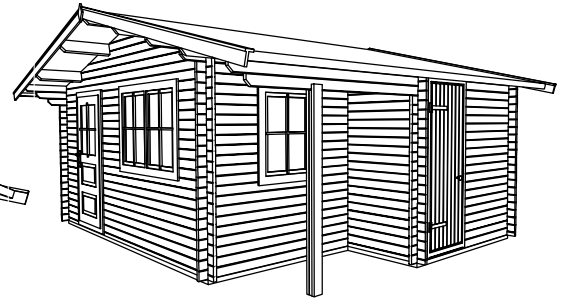
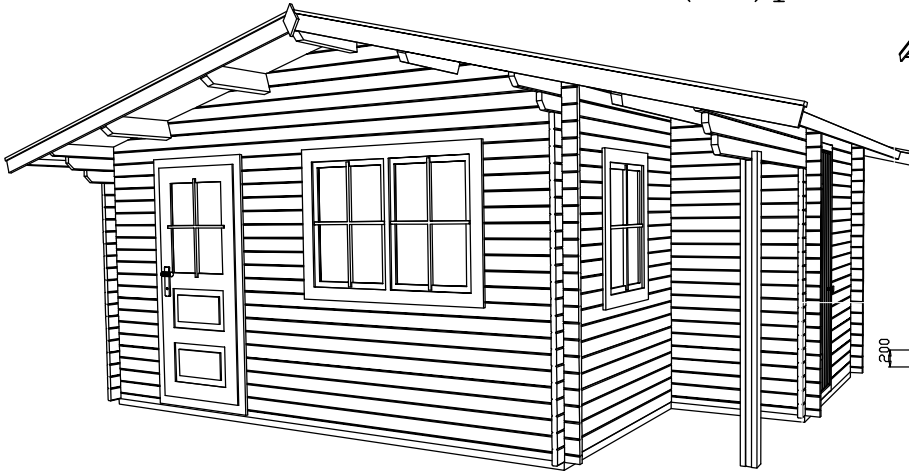


Garden house 4,00\*5,70m(22.8m<sup>2</sup>) + roof 0,50m. Wall thickness 44mm. Wall height: 2.19m. House height: 2,84m.

Garden house 2,0\*4,0m(8.0m<sup>2</sup>) + roof 0,30m. Wall thickness 44mm. Wall height: 2.19m. House height: 2,52m. Other technical data:  
-floor planks 22mm  
-underground 100\*40, 50\*40mm  
-roof planks 19mm  
-rafter 140\*44mm

Garden house 3,0\*2,5m(7.5m<sup>2</sup>) + roof 0,30m. Wall thickness 60mm. Wall height: 2.19m. House height: 2,68m.

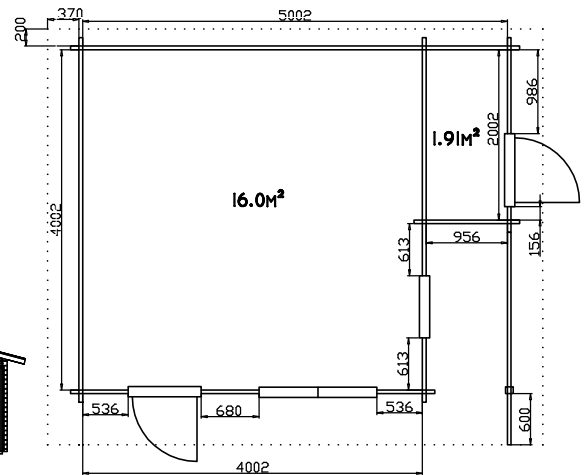
## NB5040(44)pbs6



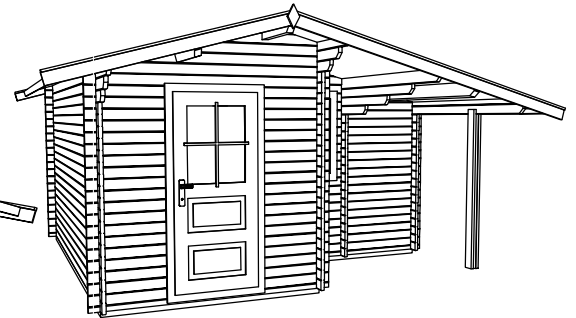
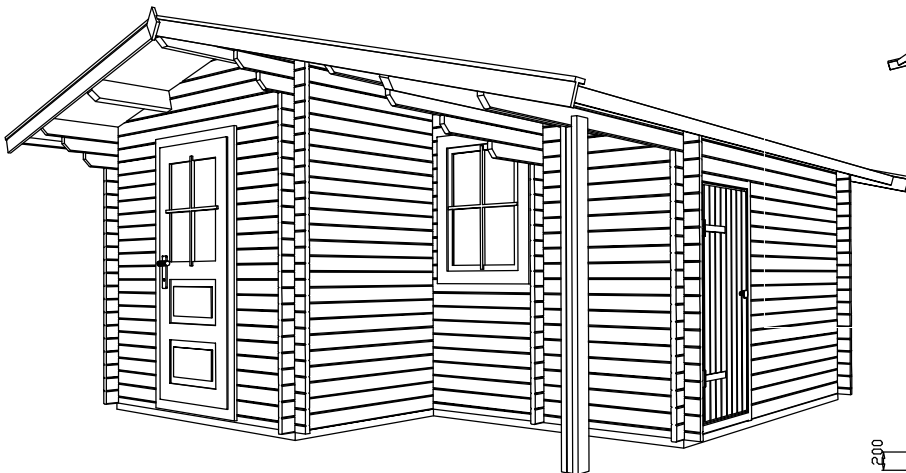
Garden house 5.00\*4.00 m + roof 0.6m. Wall thickness 44mm with double plank profile from pine or fir wood. All wooden constructions are dried until 10-12%, without painting and impregnation. Door with glass and lock, windows with glass with simple opening system. Wall height 2.13m All height 2.78m

Other technical data:

- floor planks 22mm
- underground 100\*40, 50\*40mm
- roof planks 19mm
- rafter 140\*60mm



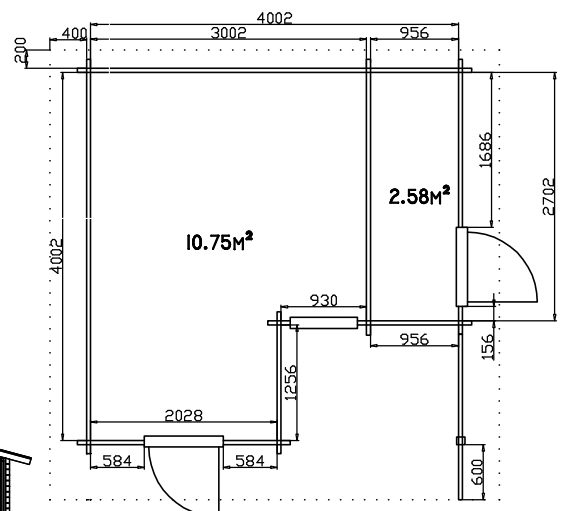
## NB4040(44)pbs6



Garden house 4.00\*4.00 m + roof 0.6m. Wall thickness 44mm with double plank profile from pine or fir wood. All wooden constructions are dried until 10-12%, without painting and impregnation. Door with glass and lock, windows with glass with simple opening system. Wall height 2.13m All height 2.55m

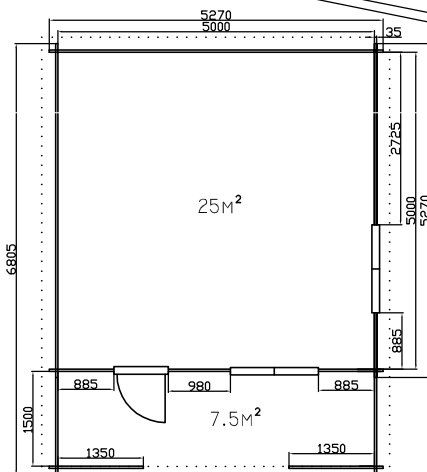
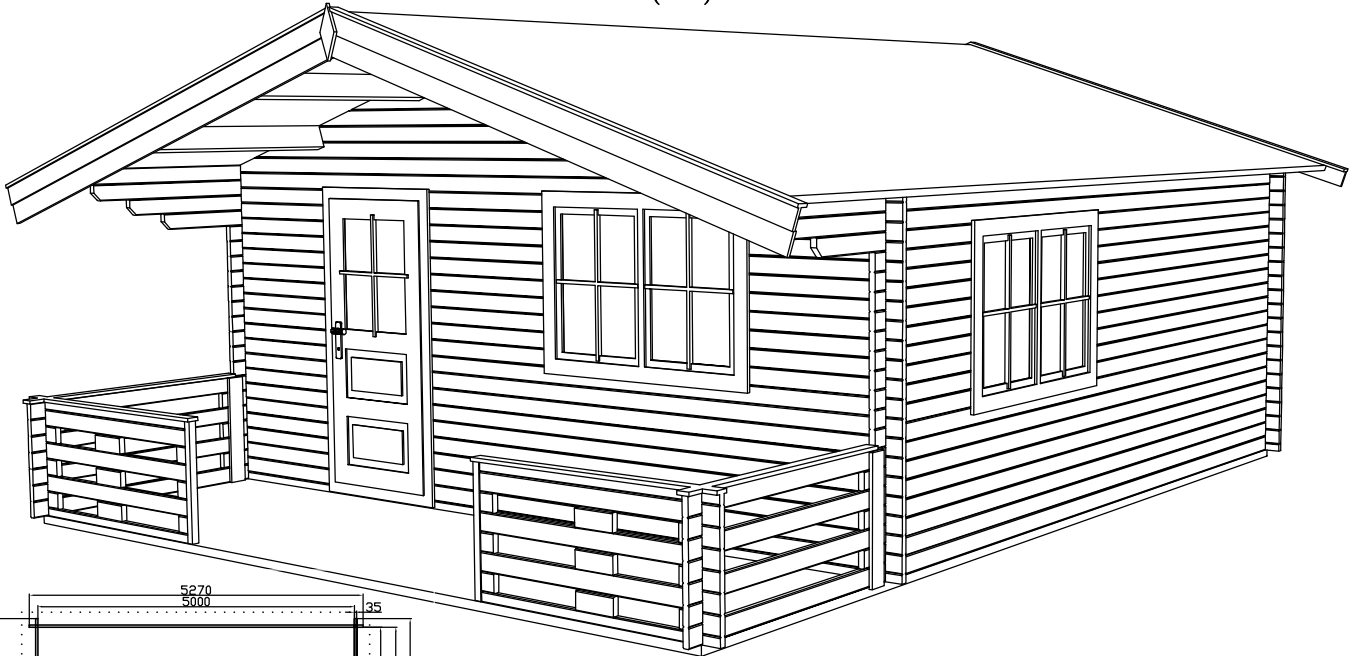
Other technical data:

- floor planks 22mm
- underground 100\*40, 50\*40mm
- roof planks 19mm
- rafter 140\*60mm





NB5050(35)v15  
NB5050(44)v15  
NB5050(60)v15



Garden house 5,00\*5,00m(25m<sup>2</sup>) + roof 1,50m + veranda. Wall thickness 35, 44, 60mm with double plank profile from pine or fir wood. All wooden constructions are dried until 10–12%, without painting and impregnation. Door with glass and lock, windows with glass with simple opening system.

Other technical data:

- floor planks 22mm
- underground 100\*40, 50\*40mm
- roof planks 19mm
- rafter 240\*60mm

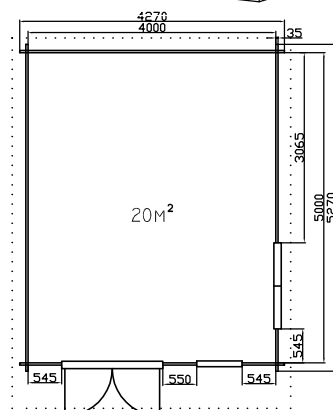
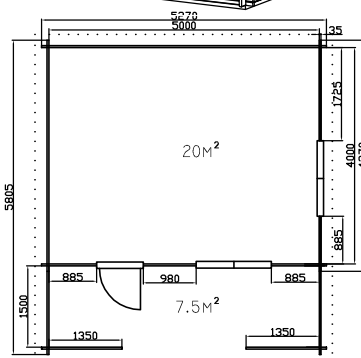
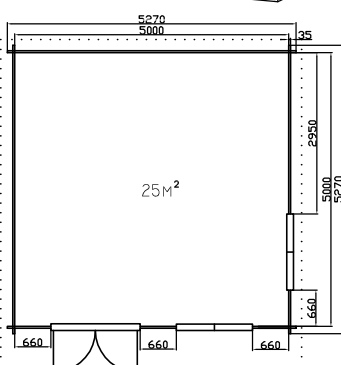
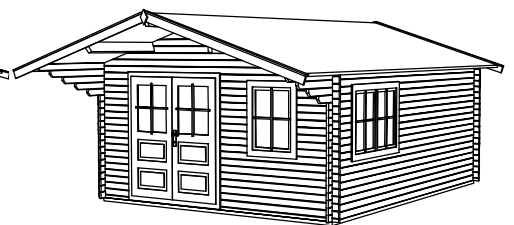
Wall height: 2.10m  
House height: 2,97m

Other modifications:

NB5050(35)Ls7  
NB5050(44)Ls7  
NB5050(60)Ls7

NB5040(35)s18v15  
NB5040(44)s18v15  
NB5040(60)s18v15

NB4050(35)Ls7  
NB4050(44)Ls7  
NB4050(60)Ls7

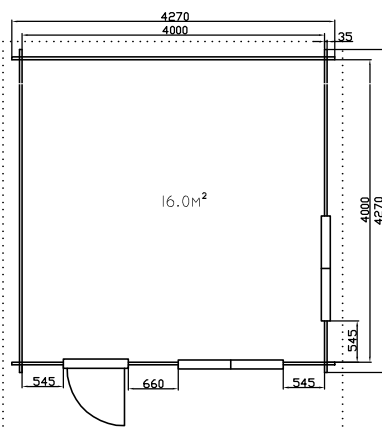
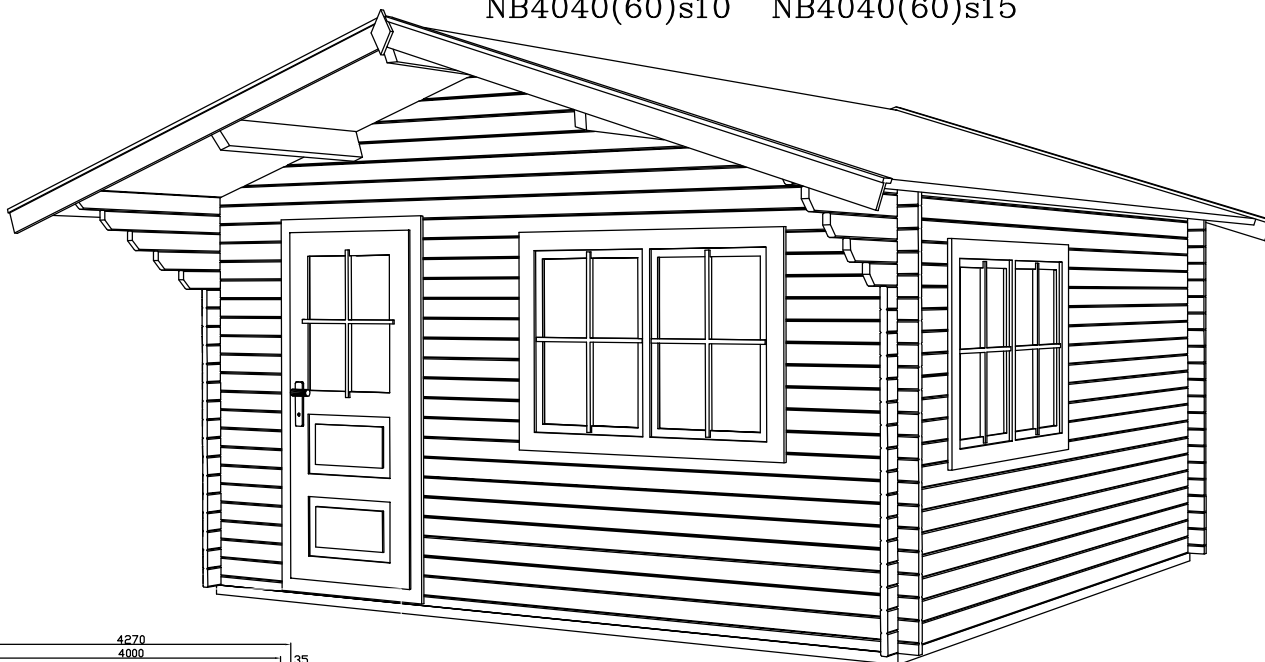


Garden house 5,00\*5,00m(25m<sup>2</sup>) + roof 0,70m with double door.

Garden house 5,00\*4,00m(20m<sup>2</sup>) + roof 1,80m and veranda 1.5m(7,5m<sup>2</sup>).

Garden house 4,00\*5,00m(20m<sup>2</sup>) + roof 0,7m with double door.

NB4040(35)s10 NB4040(35)s15  
NB4040(44)s10 NB4040(44)s15  
NB4040(60)s10 NB4040(60)s15



Garden house 4,00\*4,00m(16m<sup>2</sup>) + roof 1,00m(1.50m). Wall thickness 35, 44, 60mm with double plank profile from pine or fir wood. All wooden constructions are dried until 10–12%, without painting and impregnation. Door with glass and lock, windows with glass with simple opening system.

Other technical data:

- floor planks 22mm
- underground 100\*40, 50\*40mm
- roof planks 19mm
- rafter 140\*60mm

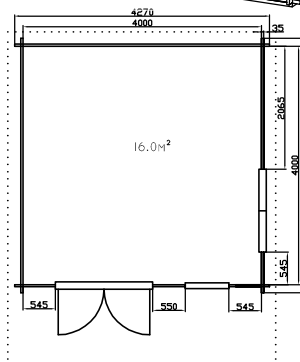
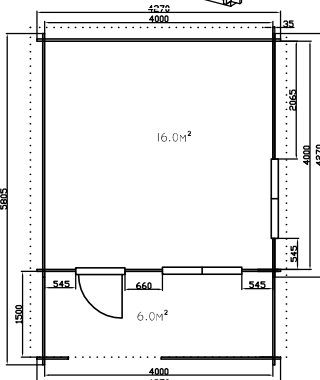
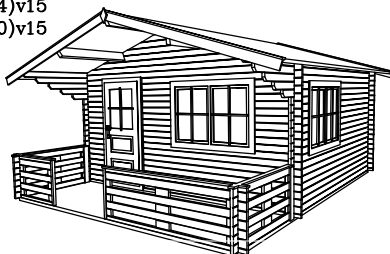
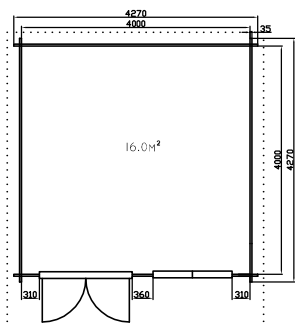
Wall height: 2.10m  
House height: 2,77m

Other modifications:

NB4040(35)Ls10  
NB4040(44)Ls10  
NB4040(60)Ls10

NB4040(35)v15  
NB4040(44)v15  
NB4040(60)v15

NB4040(35)L2s10  
NB4040(44)L2s10  
NB4040(60)L2s10

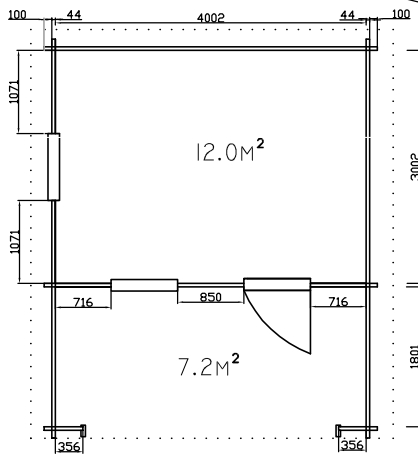
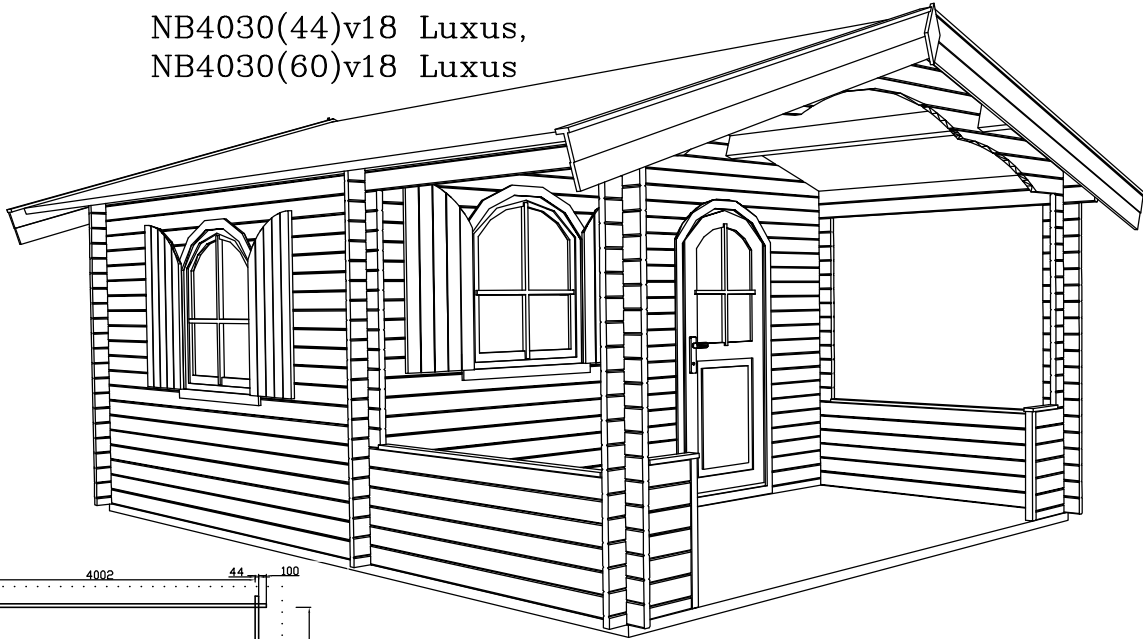


Garden house 4,00\*4,00m(16m<sup>2</sup>) + roof 1,00m with double door.

Garden house 4,00\*4,00m(16m<sup>2</sup>) + roof 1,50m and veranda 1.5m(6m<sup>2</sup>).

Garden house 4,00\*4,00m(16m<sup>2</sup>) + roof 1,00m with double door.

NB4030(44)v18 Luxus,  
NB4030(60)v18 Luxus



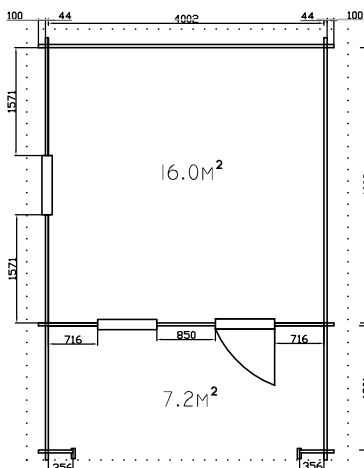
Garden house 4,00\*3,00 m + roof 2,00m + veranda 1,80m. Wall thickness 44, 60mm with double plank profile from pine or fir wood. All wooden constructions are dried until 10-12%, without painting and impregnation. Door with glass and lock, windows with glass, double opening system and shutters.

Other technical data:

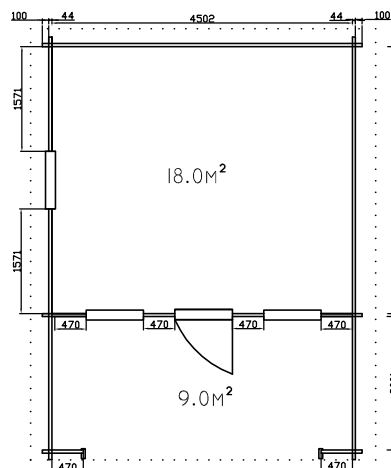
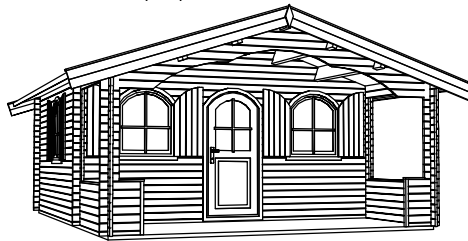
- floor planks 22mm
- underground 100\*40, 50\*40mm
- roof planks 19mm
- rafter 140\*60, 240\*60mm

Other modifications:

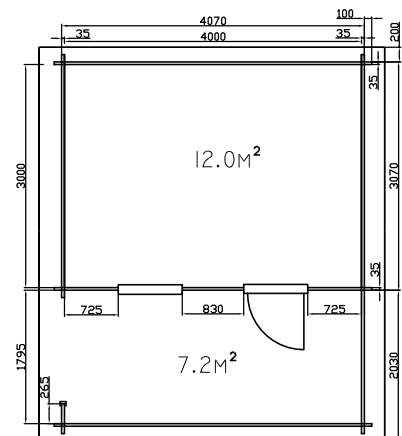
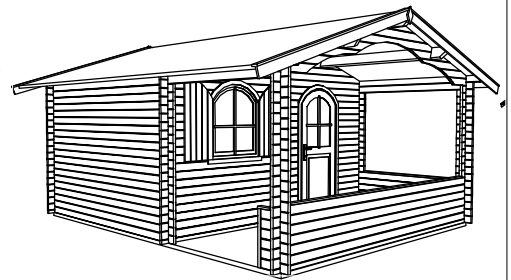
NB4040(44)v18 Luxus  
NB4040(60)v18 Luxus



NB4540(44)v20 Luxus  
NB4540(60)v20 Luxus



NB4030(35)v18 LUXUS EXTRA

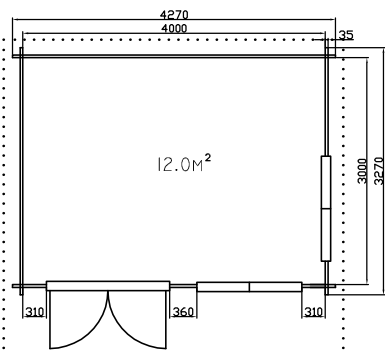
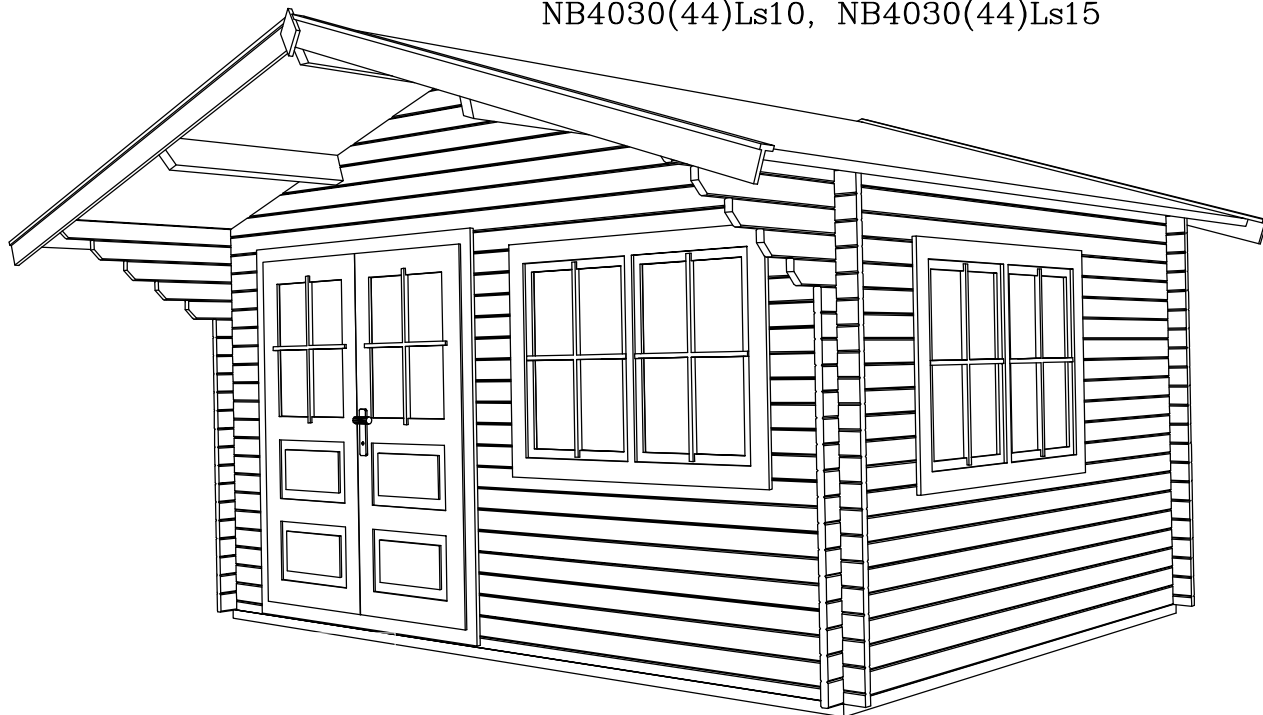


Garden house 4,00\*4,00 m + roof 2,00m and veranda 1,80m

Garden house 4,50\*4,00 m + roof 2,20m and veranda 2,00m

Garden house 4,00\*3,00 m + roof 2,00m and veranda 1,80m

NB4030(35)Ls10, NB4030(35)Ls15,  
NB4030(44)Ls10, NB4030(44)Ls15



Garden house 4,00\*3,00m(12m<sup>2</sup>) + roof 1,00m or 1,50m. Wall thickness 35, 44mm with double plank profile from pine or fir wood. All wooden constructions are dried until 10–12%, without painting and impregnation. Door with glass and lock, windows with glass with simple opening system.

Other technical data:

- floor planks 22mm
- underground 100\*40, 50\*40mm
- roof planks 19mm
- rafter 140\*60mm

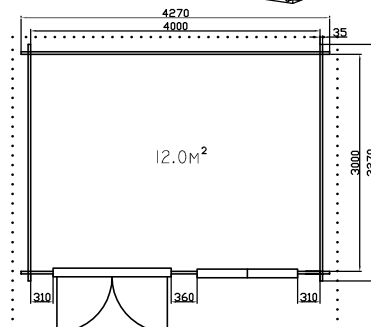
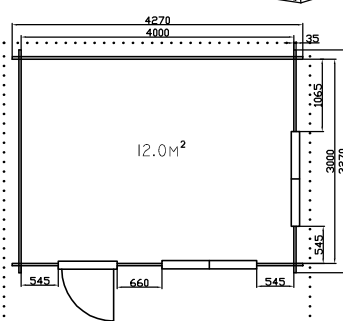
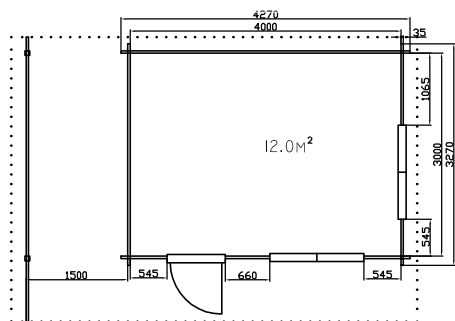
Wall height: 2.10m  
House height: 2,77m

**Other modifications:**

NB4030(35)s15K  
NB4030(44)s15K

NB4030(35)s10 NB4030(35)s15  
NB4030(44)s10 NB4030(44)s15

NB4030(35)L2s10 NB4030(35)L2s15  
NB4030(44)L2s10 NB4030(44)L2s15



Garden house 4,00\*3,00m(12m<sup>2</sup>) + roof 1,50m and shed 1.50\*4.77m.

Wall height: 2.10m  
House height: 2,77m

Garden house 4,00\*3,00m(12m<sup>2</sup>) + roof 1,00m or 1,50m.

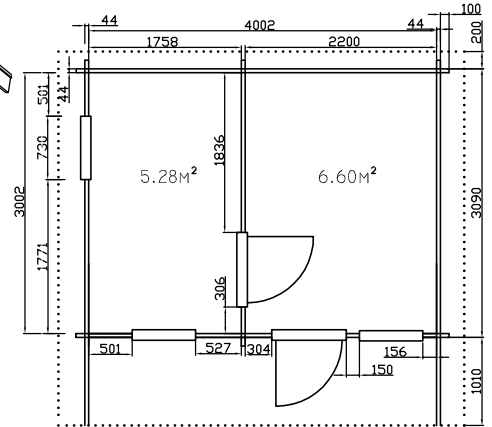
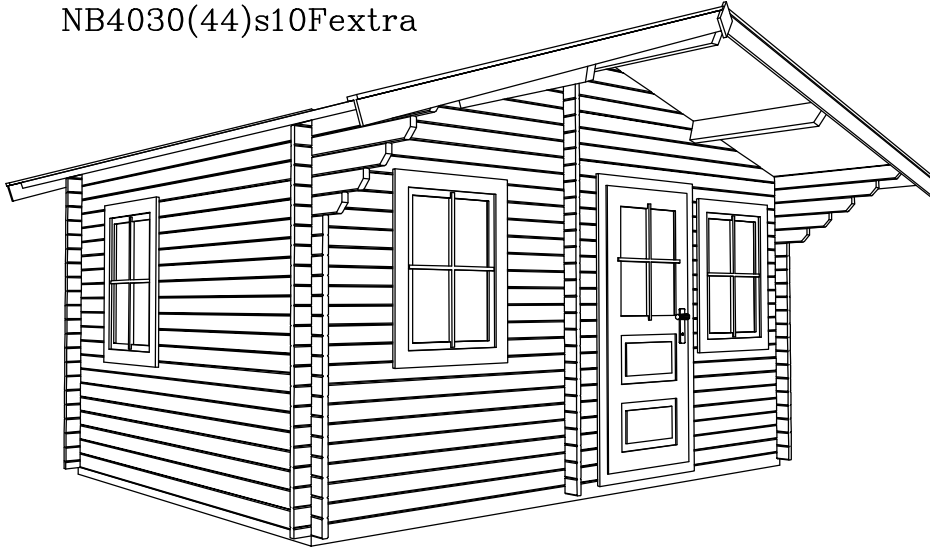
Wall height: 2.10m  
House height: 2,77m

Garden house 4,00\*3,00m(12m<sup>2</sup>) + roof 1,00 or 1,50m with double door.

Wall height: 2.10m  
House height: 2,77m



NB4030(44)s10Fextra



Garden house 4,00\*3,00m(12m<sup>2</sup>) + roof 1,00m . Wall thickness 44mm with double plank profile from pine or fir wood.

All wooden constructions are dried until 10–12%, without painting and impregnation.

Door with glass packet and lock, windows with glass packet and simple opening system. Double roof.

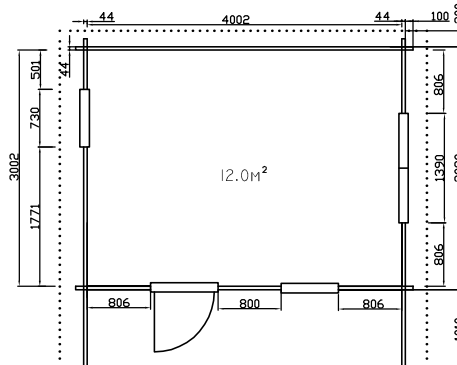
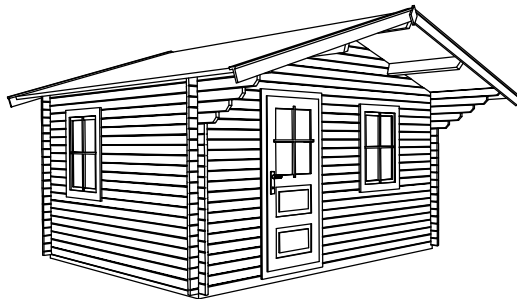
Other technical data:

- floor planks 22mm
- underground 100\*35, 50\*35mm
- roof planks 19+19mm
- rafter 140\*60mm

Wall height: 2.13m  
House height: 2,78m

Other modifications:

NB4030(44)s10 Fextra1



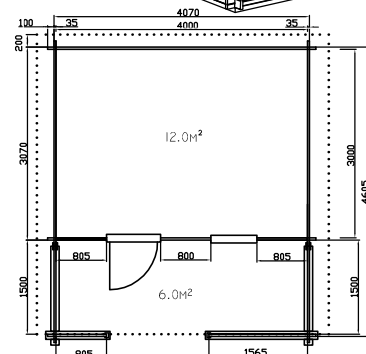
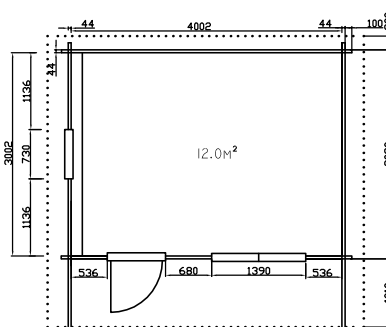
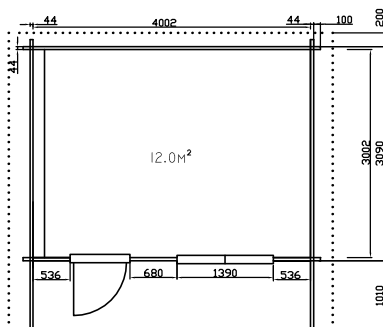
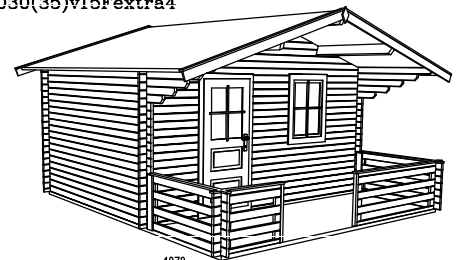
Garden house  
4,00\*3,00m(12m<sup>2</sup>) + roof  
1,00m. Double roof.

Wall height: 2.13m  
House height: 2,78m

NB4030(44)s10Fextra2

NB4030(44)s10Fextra3

NB4030(35)v15Fextra4



Garden house 4,00\*3,00m(12m<sup>2</sup>) + roof 1,00m. Double roof.

Wall height: 2.13m  
House height: 2,78m

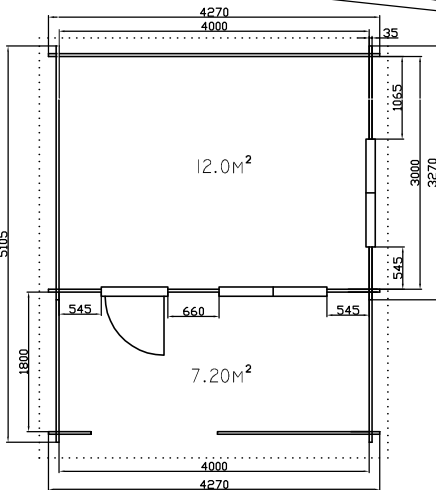
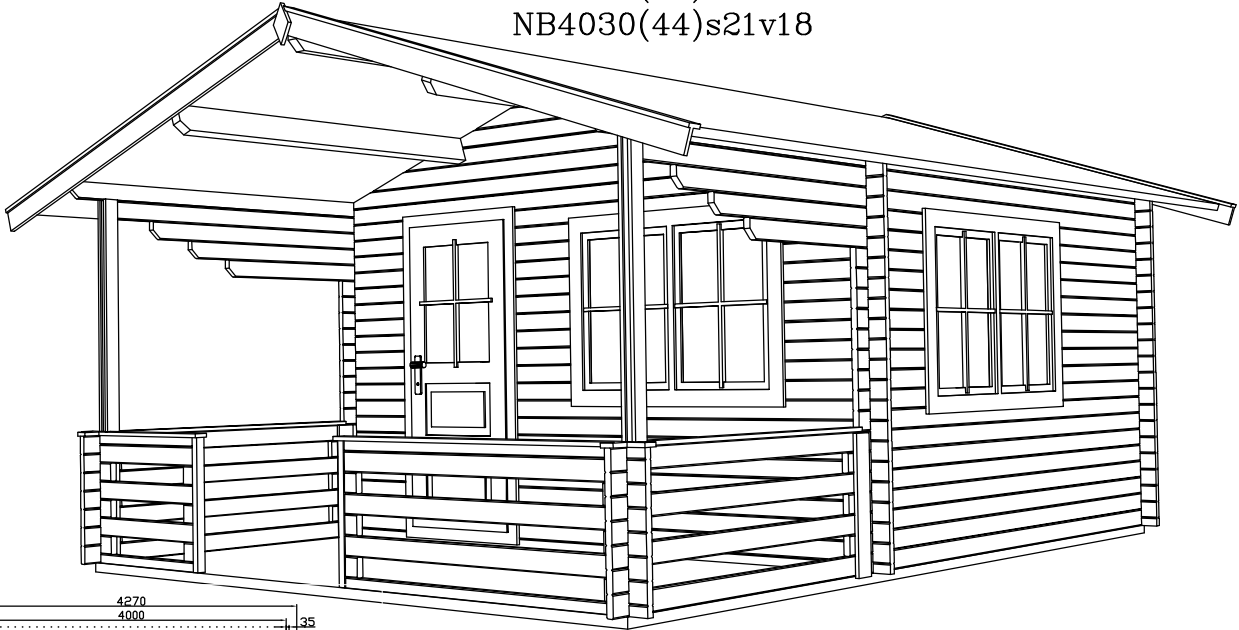
Garden house 4,00\*3,00m(12m<sup>2</sup>) + roof 1,00m. Double roof.

Wall height: 2.13m  
House height: 2,78m

Garden house 4,00\*3,00m(12m<sup>2</sup>) + veranda(6m<sup>2</sup>) and roof 1,50m. Door and window with glass, single roof.

Wall height: 2.10m  
House height: 2,77m

NB4030(35)s21v18,  
NB4030(44)s21v18



Garden house 4,00\*3,00 m + roof 2,10m + veranda 1.80m. Wall thickness 35, 44mm with double plank profile from pine or fir wood. All wooden constructions are dried until 10–12%, without painting and impregnation. Door with glass and lock, windows with glass with simple opening system.

Other technical data:

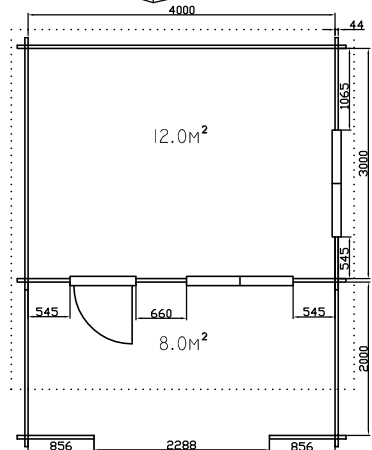
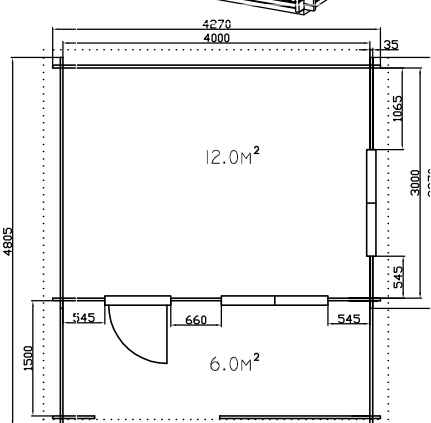
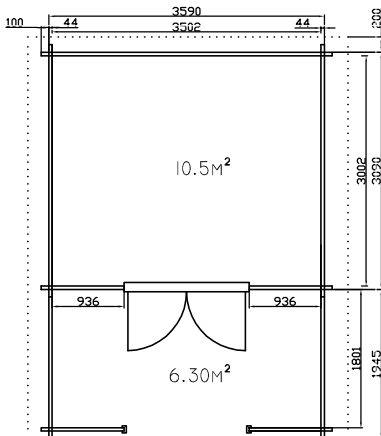
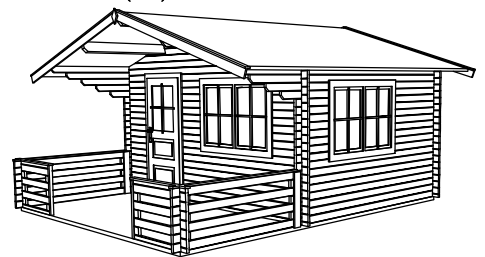
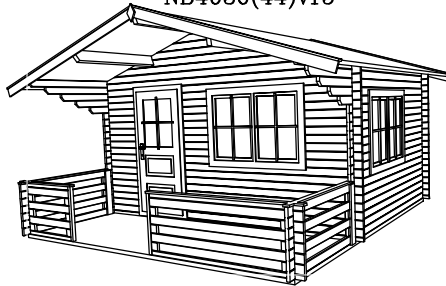
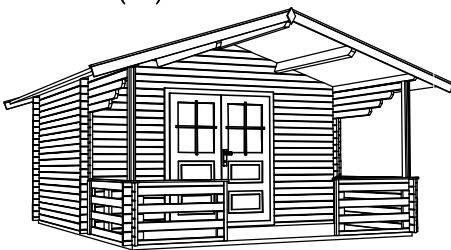
- floor planks 22mm
- underground 100\*40, 50\*40mm
- roof planks 19mm
- rafter 140\*60mm

Wall height: 2,10m  
House height: 2.77m

Other modifications:  
NB3530(44)Lv18

NB4030(35)v15  
NB4030(44)v15

NB4030(35)s14v20  
NB4030(44)s14v20

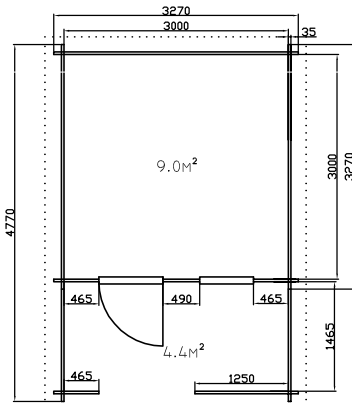
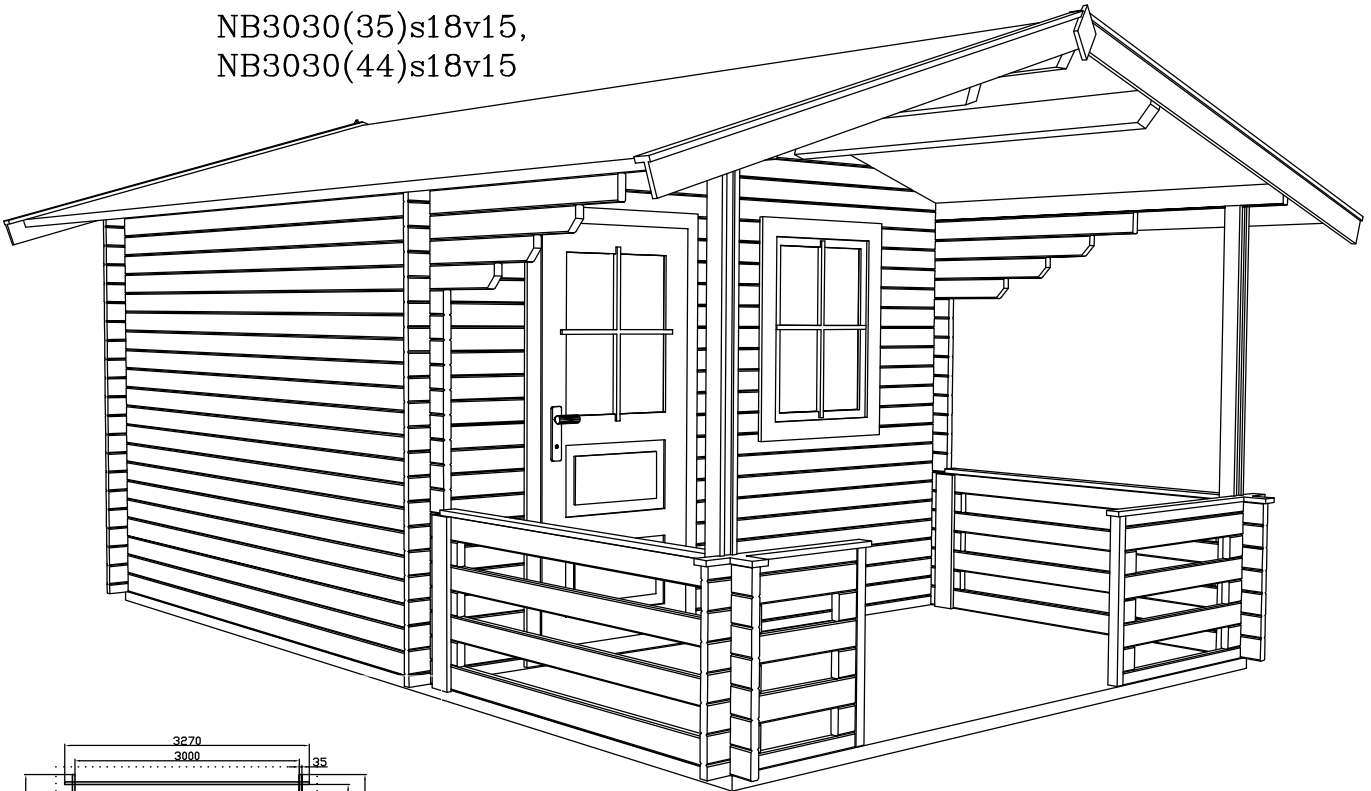


Garden house 3,50\*3,00 m + roof 1.95m, veranda 1,80m. Height 2.7m

Garden house 4,00\*3,00 m + roof and veranda 1,50m

Garden house 4,00\*3,00 m + roof 1,4m and veranda 2,00m

NB3030(35)s18v15,  
NB3030(44)s18v15



Garden house 3,00\*3,00m(9m<sup>2</sup>) + roof 1,80m + veranda 1,47m(4,44m<sup>2</sup>). Wall thickness 35, 44mm with double plank profile from pine or fir wood. All wooden constructions are dried until 10–12%, without painting and impregnation. Door with glass and lock, windows with glass with simple opening system.

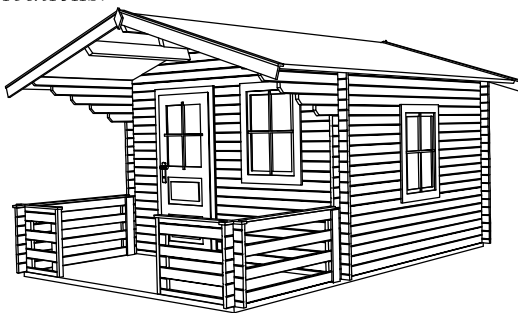
Other technical data:

- floor planks 22mm
- underground 100\*40, 50\*40mm
- roof planks 19mm
- rafter 140\*60mm

Wall height: 2,10m  
House height: 2.61m

Other modifications:

NB3030(35)v15  
NB3030(44)v15

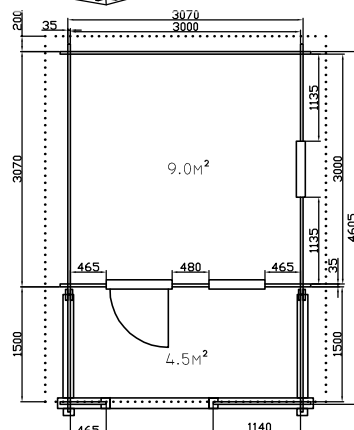


NB3030(35)Lv15  
NB3030(44)Lv15



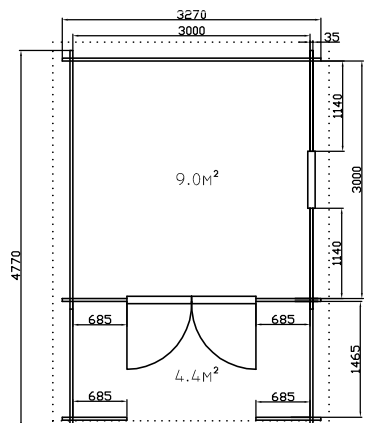
Garden house  
3,00\*3,00m (9m<sup>2</sup>) +  
roof and veranda  
1,47m (4,44m<sup>2</sup>).

Wall height: 2,10m  
House height: 2.61m

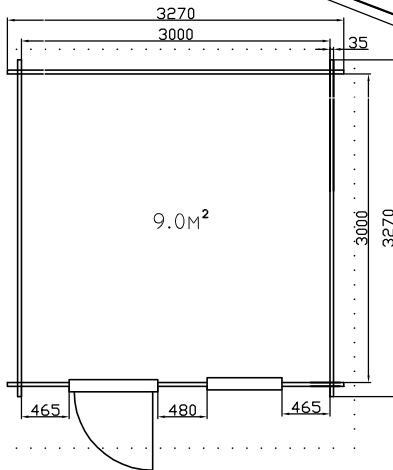
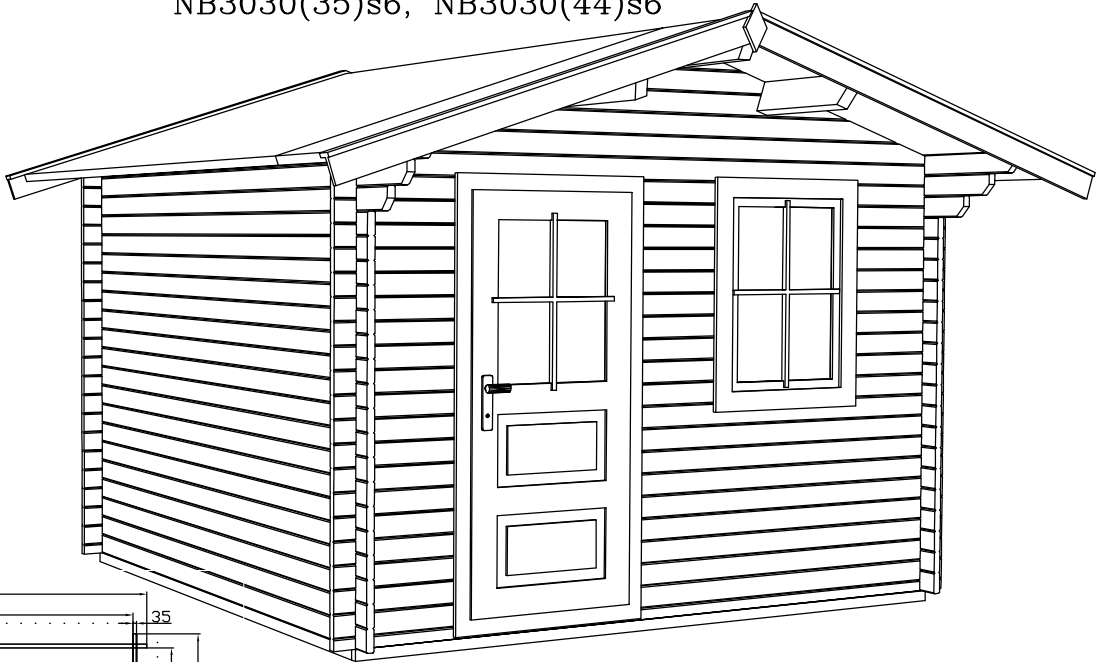


Garden house  
3,00\*3,00m (9m<sup>2</sup>) +  
roof and veranda  
1,47m (4,44m<sup>2</sup>),  
double door.

Wall height: 2,10m  
House height: 2.61m



NB3030(35)s6, NB3030(44)s6



Garden house 3,00\*3,00m(9m<sup>2</sup>) + roof 0,60m . Wall thickness 35, 44mm with double plank profile from pine or fir wood.

All wooden constructions are dried until 10–12%, without painting and impregnation.

Door with glass and lock, windows with glass with simple opening system.

Other technical data:

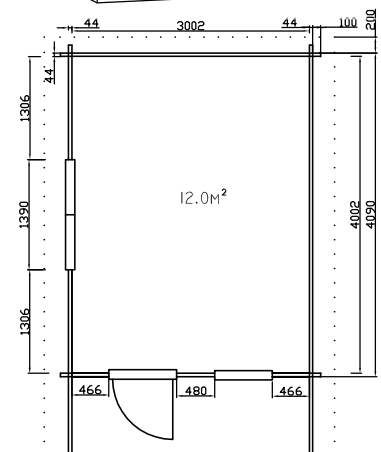
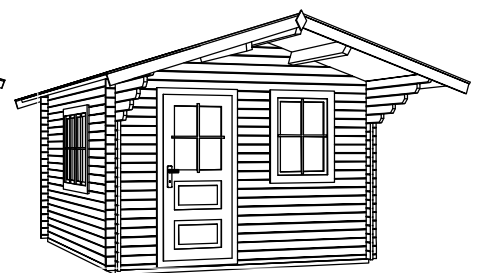
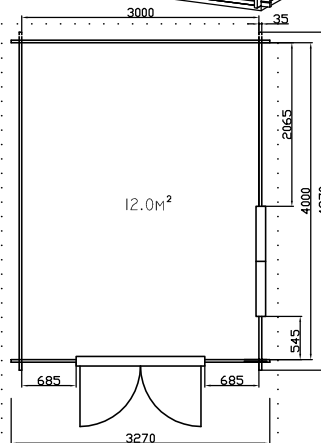
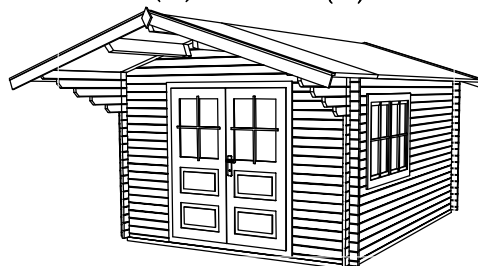
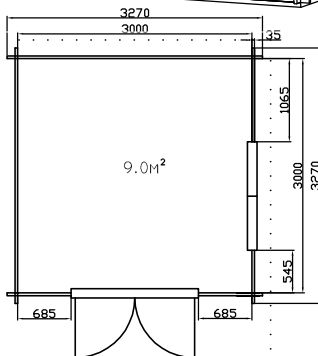
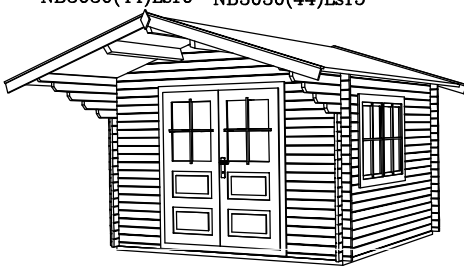
- floor planks 22mm
- underground 100\*40, 50\*40mm
- roof planks 19mm
- rafter 140\*44mm

Wall height: 2,10m  
House height: 2.61m

Other modifications:  
NB3030(35)Ls10 NB3030(35)Ls15  
NB3030(44)Ls10 NB3030(44)Ls15

NB3040(35)Ls10 NB3040(35)Ls15  
NB3040(44)Ls10 NB3040(44)Ls15

NB3040(44)s10Fextra5



Garden house 3,00\*3,00m (9m<sup>2</sup>) + roof 1.00m(1,50m), double door.

All houses wall height: 2,10m  
All houses height: 2.61m

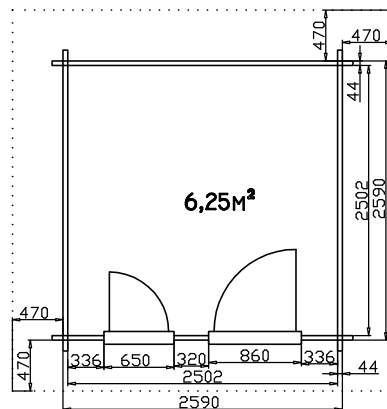
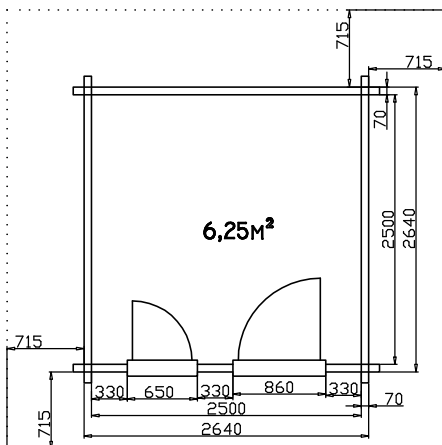
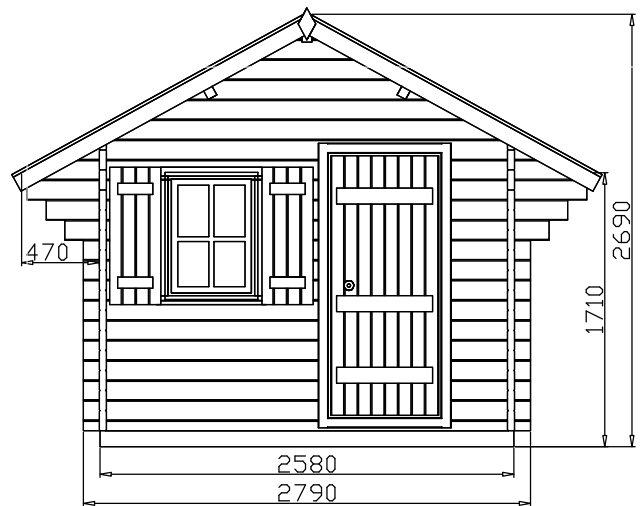
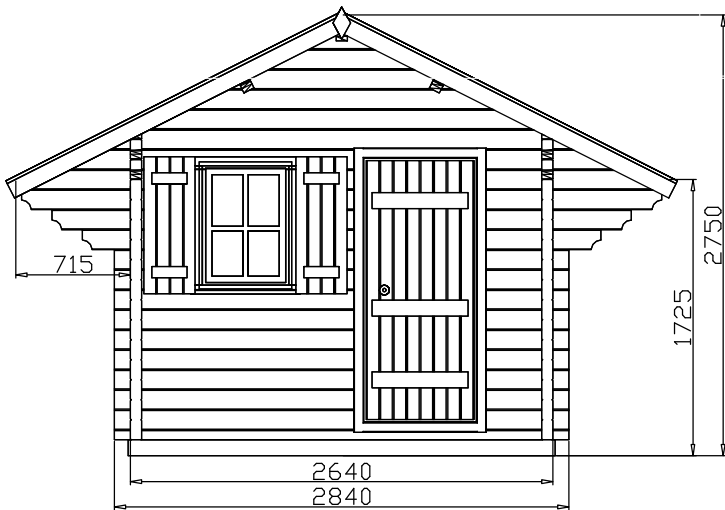
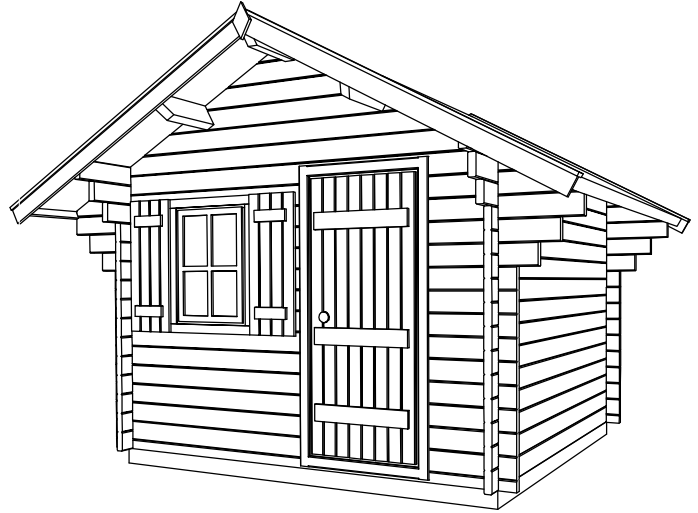
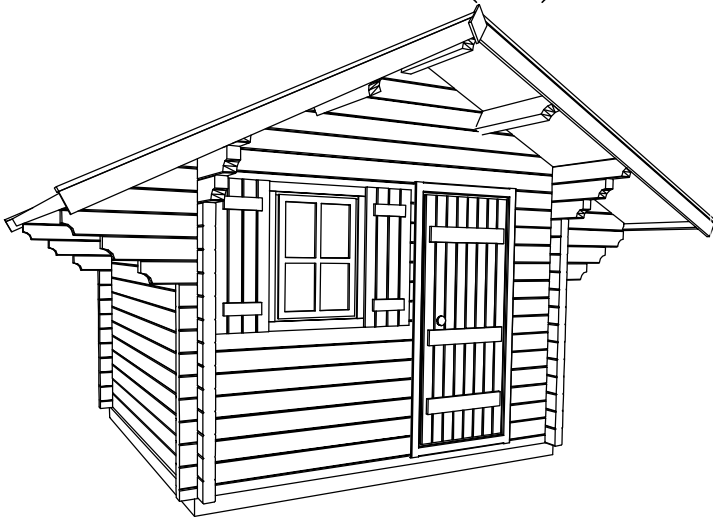
Garden house 3,00\*4,00m (12m<sup>2</sup>)+ roof 1.00m(1,50m), double door.

Garden house 3,00\*4,00m (12m<sup>2</sup>) + roof 1.00m, single door.



CHALET NB2525(70)s7

CHALET NB2525(44)s5



Garden house 2.50\*2.50 m + roof 0.7(0.5)m

Wall thickness 70 or 44mm with double plank profile from pine or fir wood.

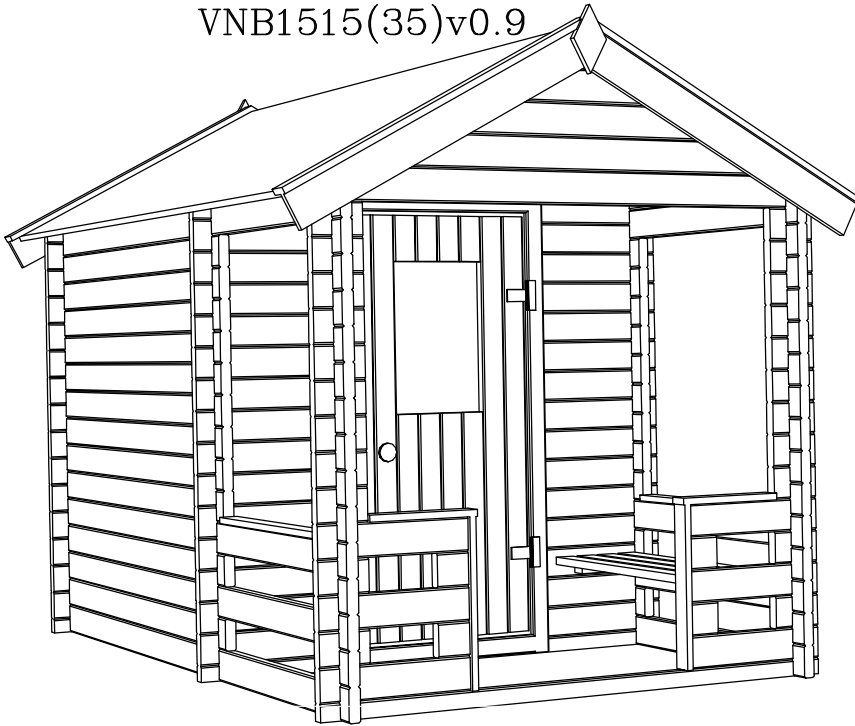
All wooden constructions are dried until 10-12%, without painting and impregnation.

Door with lock mechanism, windows with glass, simple opening system and shutters. The walls are jointed with metal parts.

Other technical data:

- floor planks 22mm
- underground 100\*35 mm
- roof planks 19mm
- rafter 140\*60, 140\*70mm

VNB1515(35)v0.9



Children house 1,50\*1,50m (2.25m<sup>2</sup>) + veranda 0,90m, bench. Wall thickness 35mm with double plank profile from pine or fir wood.

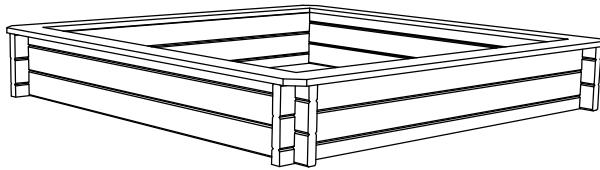
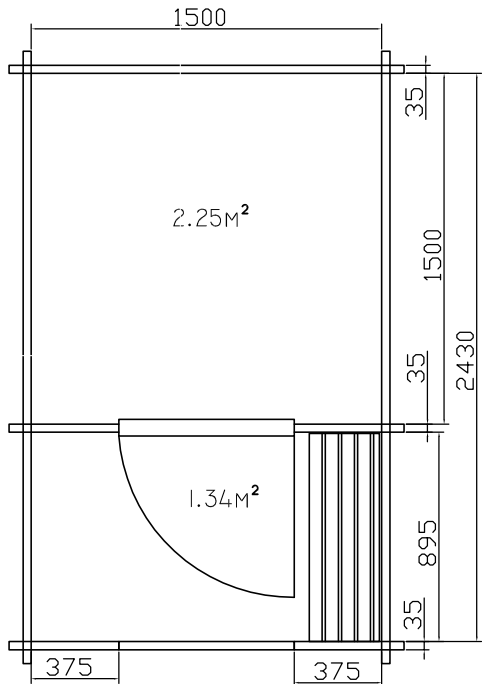
All wooden constructions are dried until 10–12%, without painting and impregnation.

Wall height: 1.55m

House height: 1.95m

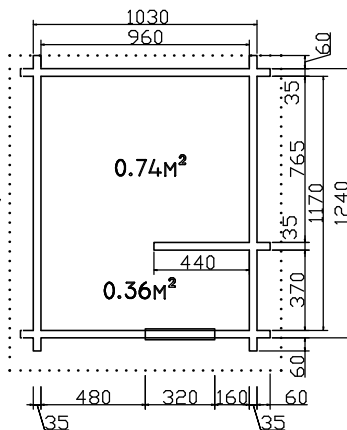
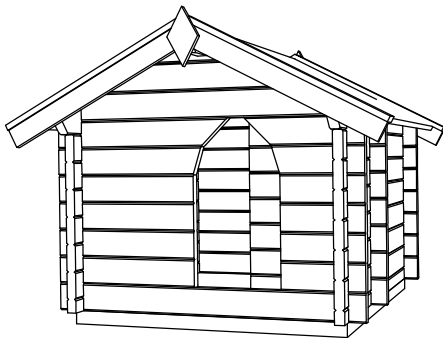
Other technical data:

- floor planks 22mm
- underground 100\*35, 50\*35mm
- roof planks 19mm
- rafter 100\*35mm

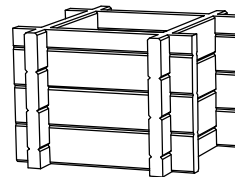
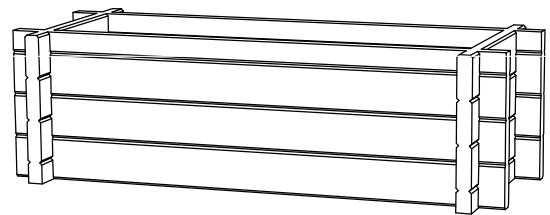


Sandboxes 1,50\*1,50m (2.25m<sup>2</sup>), Wall thickness 35mm with double plank profile from pine or fir wood. All wooden constructions are dried until 10–12%, without painting and impregnation.

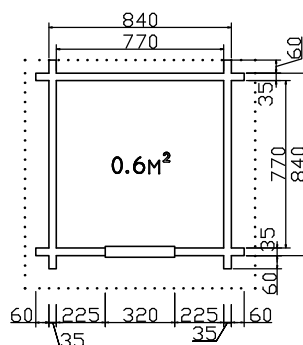
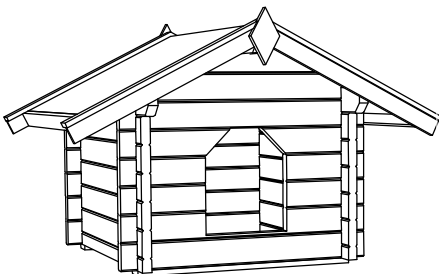
Kennel BdB9676(35),  
Wall thickness 35mm.



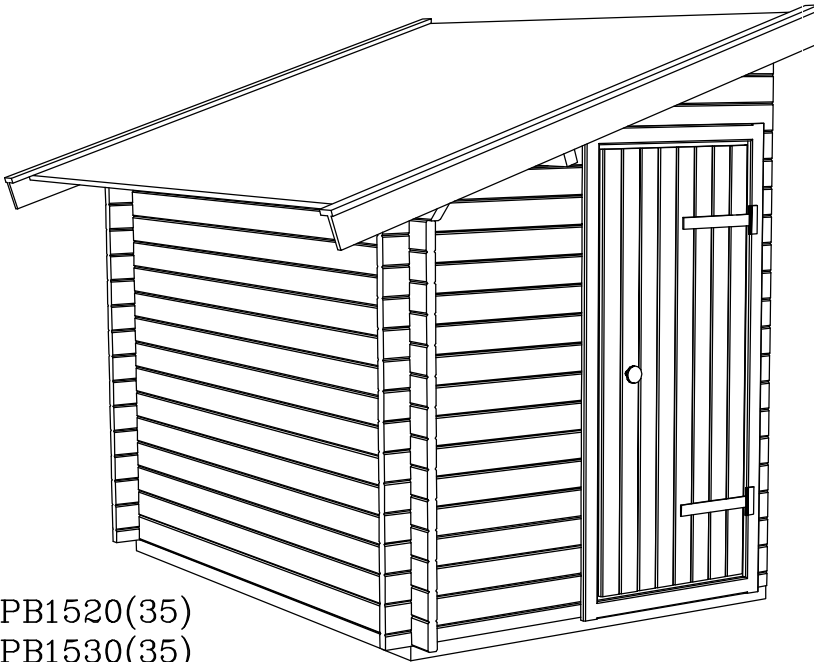
Kennel BdB7777(35),  
Kennel BdB4141(35)  
Wall thickness 35mm.



Flowerboxes  
1,0\*0,30\*0,35m,  
0,8\*0,3\*0,35m,  
0,43\*0,43\*0,3m,  
0,33\*0,33\*0,3m  
Wall thickness 35mm.



Annex

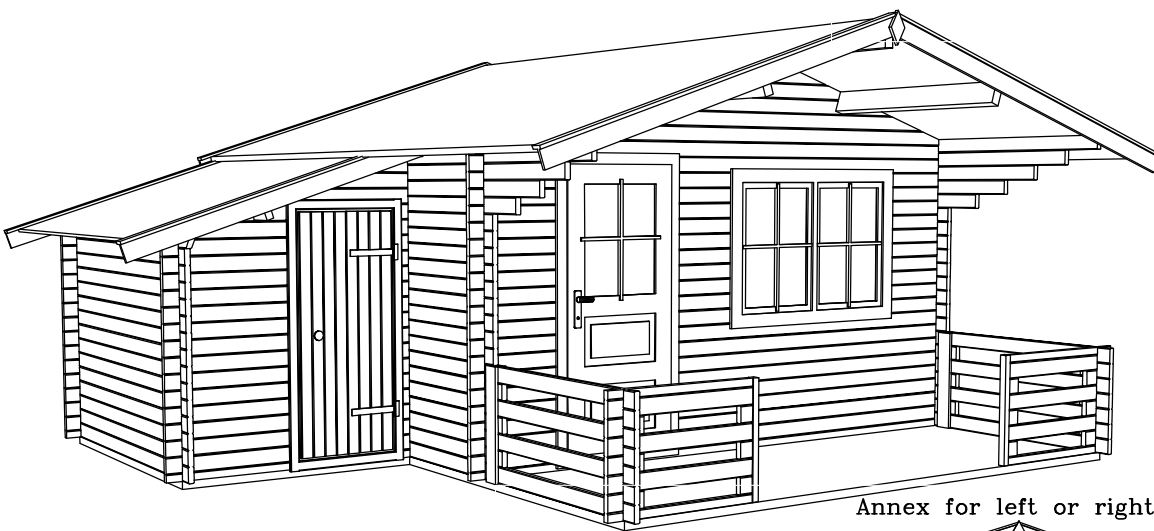
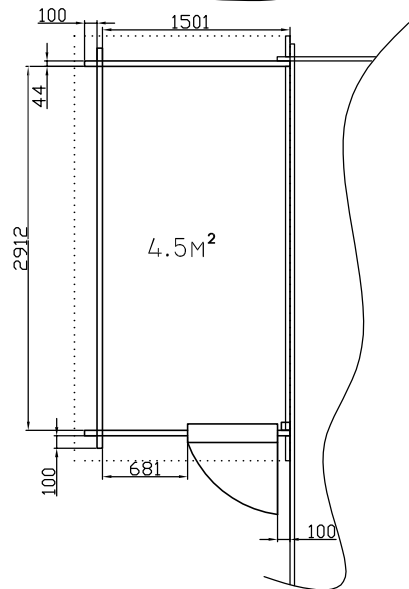
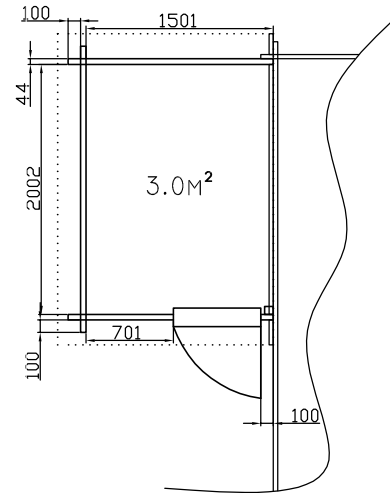


- PB1520(35)
- PB1530(35)
- PB1520(44)
- PB1530(44)

Annex 1.50\*2,00m and 1.50\*3.00m. Wall thickness 35,44mm with double plank profile from pine or fir wood. All wooden constructions are dried until 10–12%, without painting and impregnation. Door with lock.

- floor planks 22mm
- underground 100\*35, 50\*35mm
- roof planks 19mm
- rafter 140\*44mm

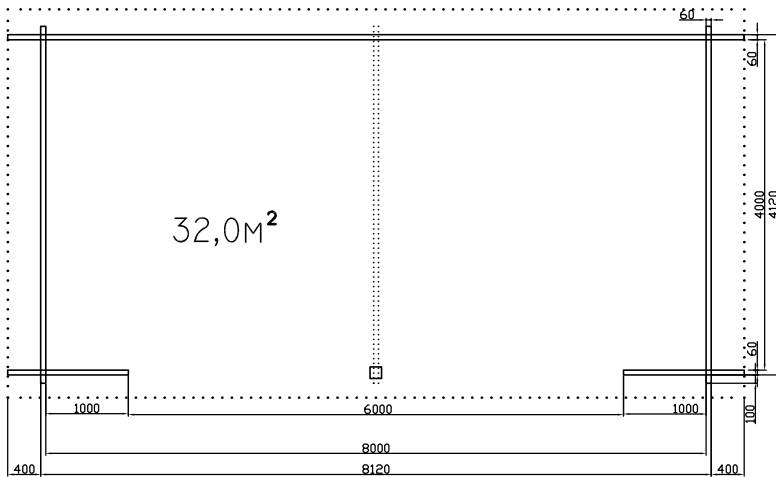
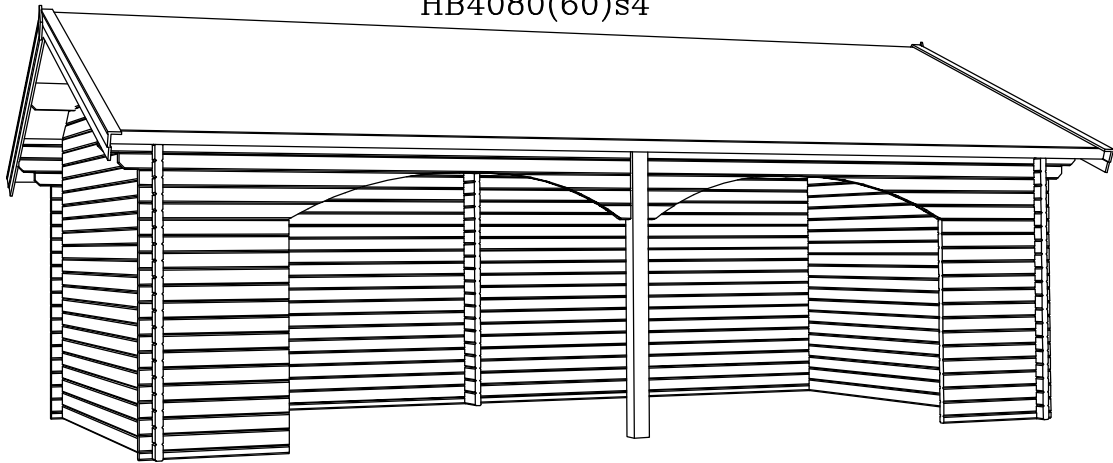
All height 2.00m, wall height 1.55m, roof angle 18°



Annex for left or right side



HB4080(60)s4



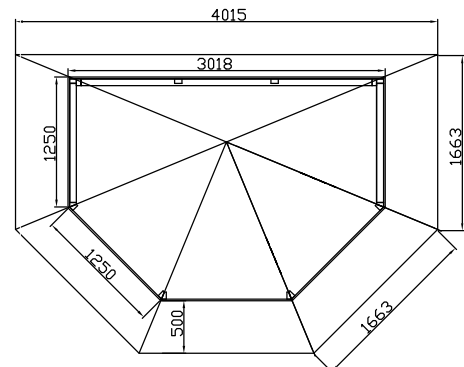
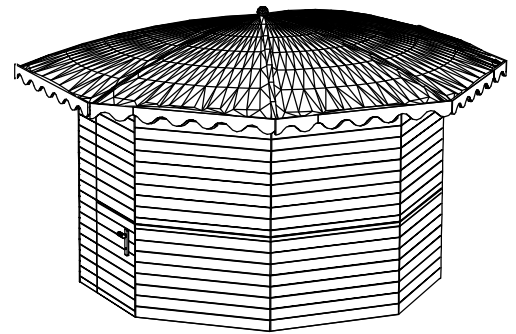
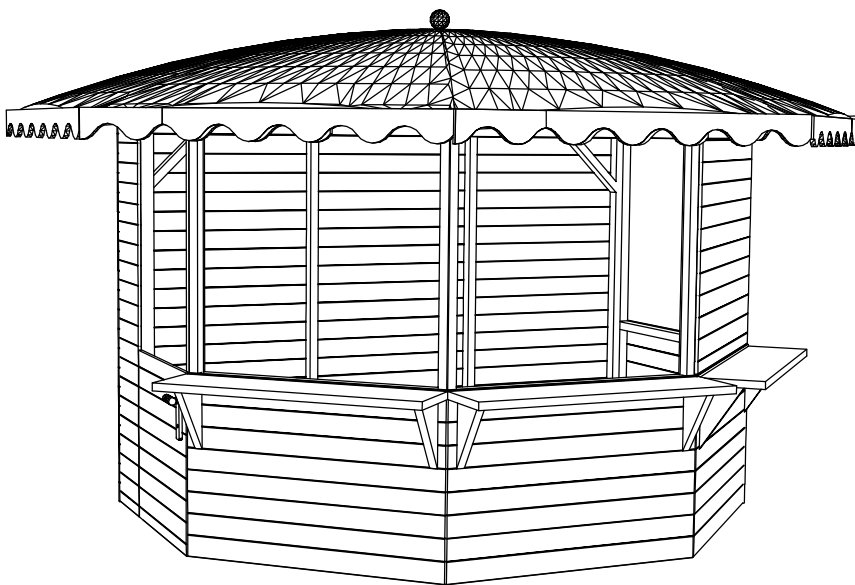
Horses house 4,00\*8,00m(32m<sup>2</sup>) + roof 0,40m. Wall thickness 44 or 60mm with double plank profile from pine or fir wood. All wooden constructions are dried until 10-12%, without painting and impregnation.

Other technical data:

- underground 70\*44mm
- roof planks 19mm
- rafter 240\*60mm

Wall height: 2.56m  
House height: 3,56m

Trade house

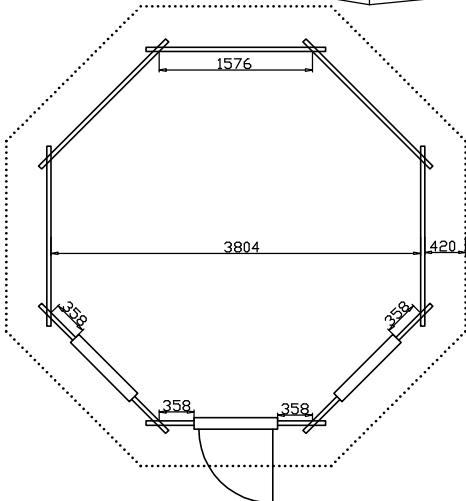
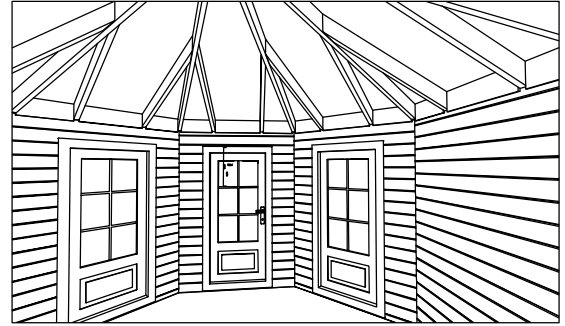
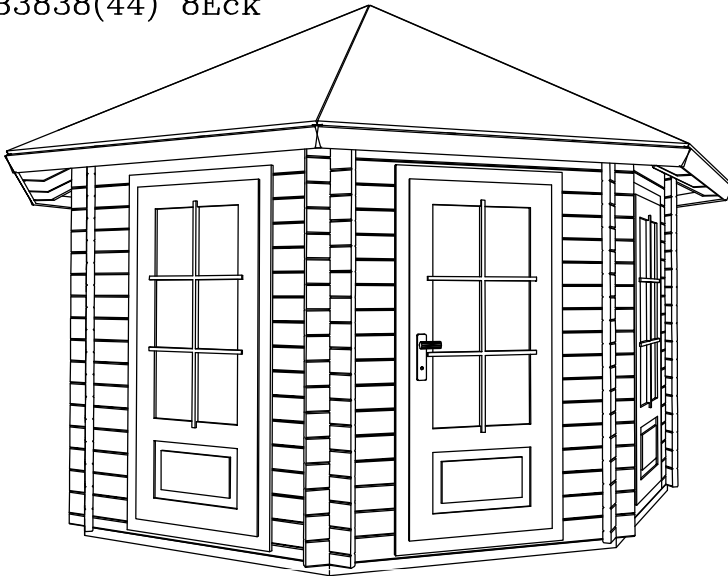


Wall thickness- 16mm,  
Floor thickness- 22mm,  
Roof-white metal,  
External dimensions- 3.02\*2.15m.

Wall height- 2.15m.  
House height-2.50m.



NB3838(44) 8Eck



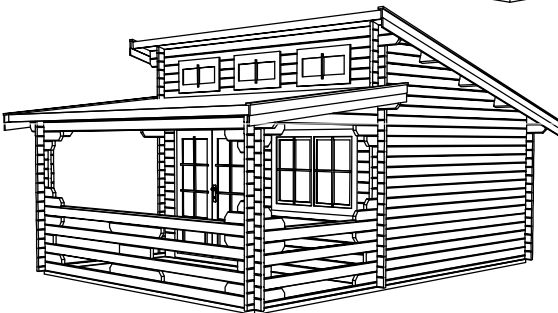
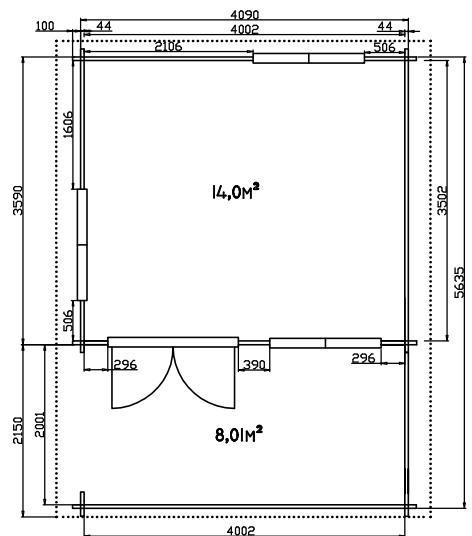
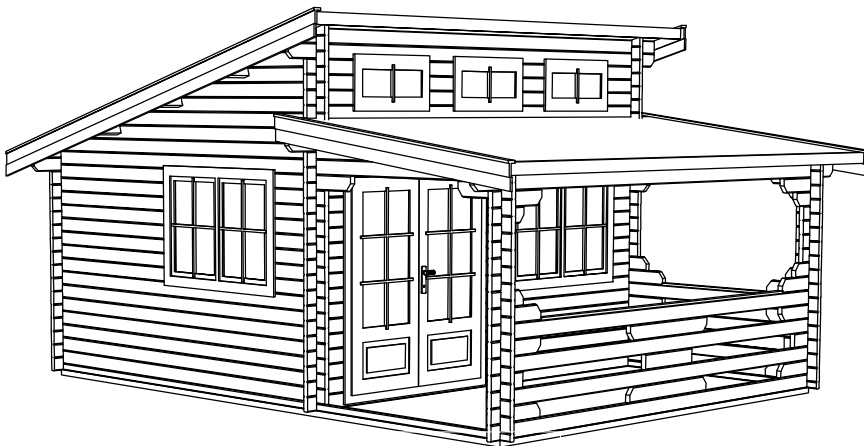
Garden pavilion  $\varnothing$  3,80 (~12m<sup>2</sup>) + roof 0,42m .  
Wall thickness 44mm with double plank profile from pine or fir wood.  
All wooden constructions are dried until 10–12%, without painting and impregnation.  
Door with glass and lock, windows with glass (not opening).

Other technical data:

- floor planks 22mm
- underground 100\*40, 50\*40mm
- roof planks 19mm
- rafter 140\*44mm

Wall height: 2,15m  
House height: 3,45m

NB4035(44)v20 PULTDACH

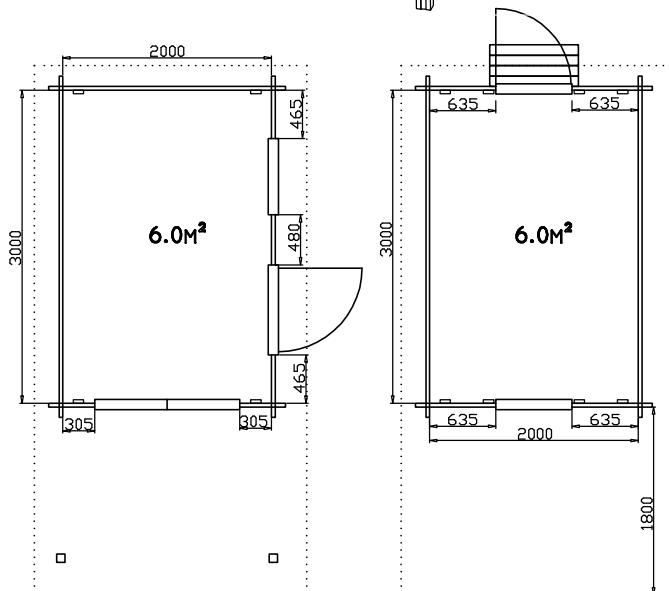
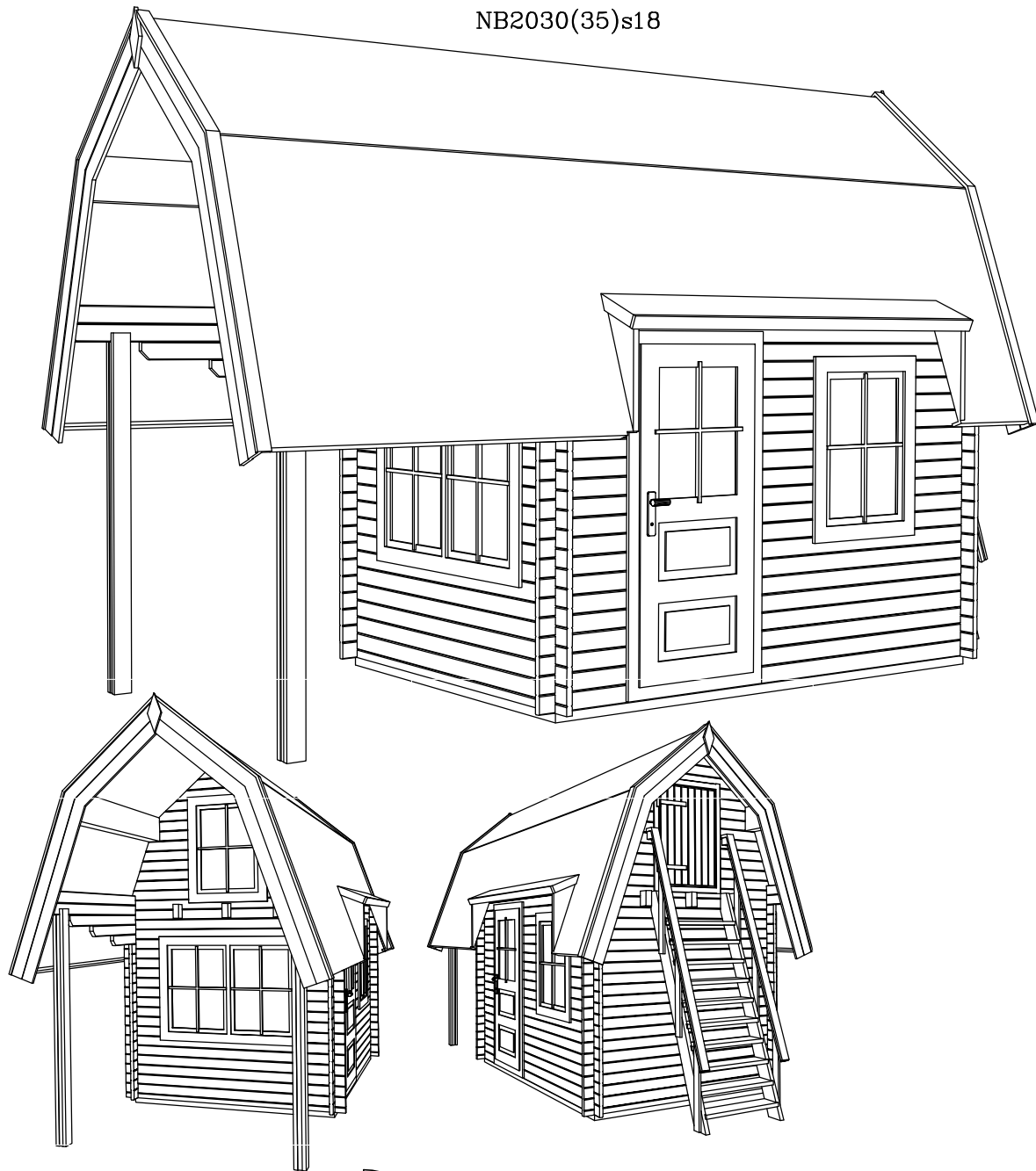


Garden house 4,00\*3,50m(14m<sup>2</sup>) + veranda 2,00m(8m<sup>2</sup>). Wall thickness 44, 60mm with double plank profile from pine or fir wood.

All wooden constructions are dried until 10–12%, without painting and impregnation.  
Door with glass and lock, windows with glass with simple opening system.

Wall height: 2,13m  
House height: 3,32m

NB2030(35)s18



Garden house 2.00\*3,00 m + roof 1,80m. Wall thickness 35mm with double plank profile from pine or fir wood. Area 6m<sup>2</sup>+6m<sup>2</sup> second floor. Total area 12m<sup>2</sup>. All wooden constructions are dried until 10-12%, without painting and impregnation.

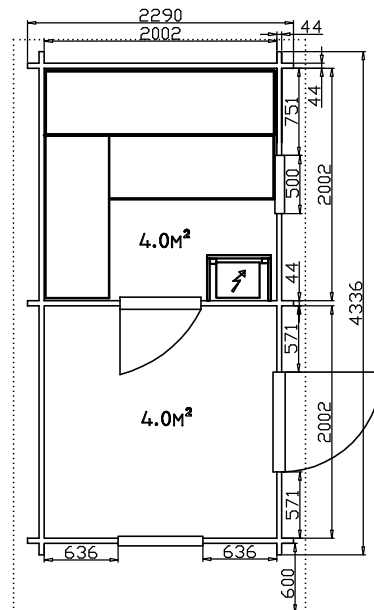
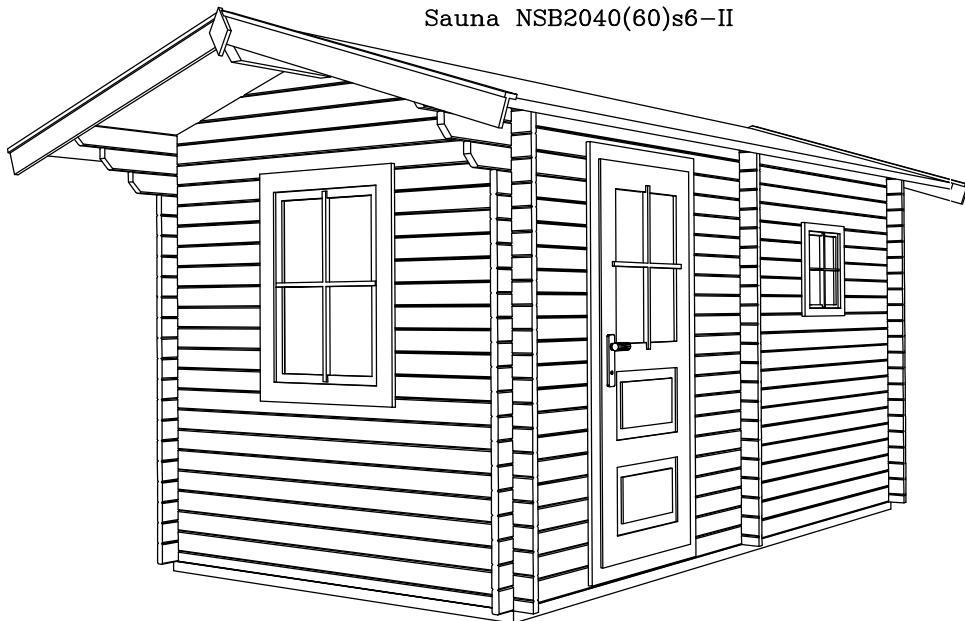
Door with glass and lock, windows with glass with simple opening system.

All height 3.5m, second floor height 1.5m

Other technical data:

-floor planks	22mm
-underground	100*35, 50*35mm
-roof planks	19mm
-rafter	240*60, 140*60mm

Sauna NSB2040(44)s6-II  
Sauna NSB2040(60)s6-II



**Material**

The walls, roof and floor made from fir tree wood, the benches made from leaf-bearing tree wood.

**Door**

The doors and window made from fir tree wood with glass packet in sauna room.

**Completion**

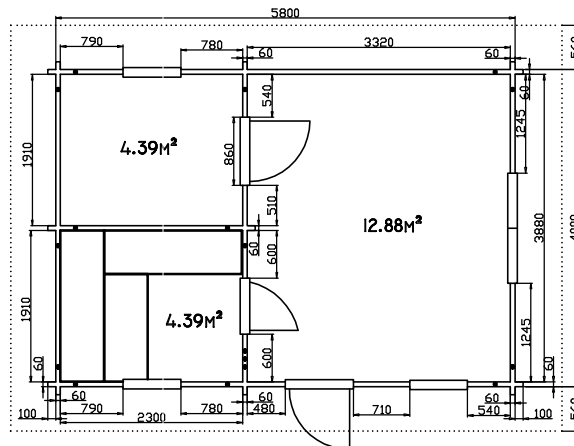
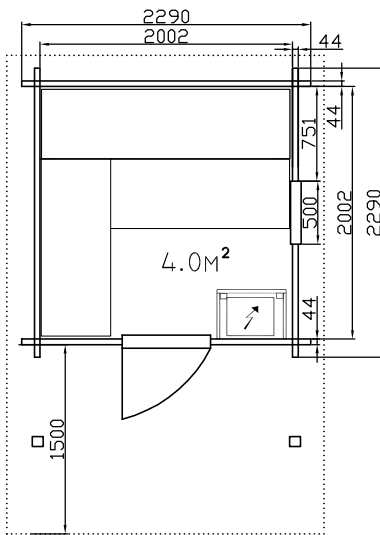
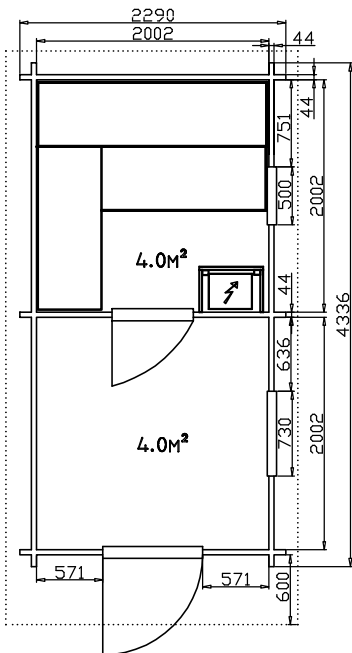
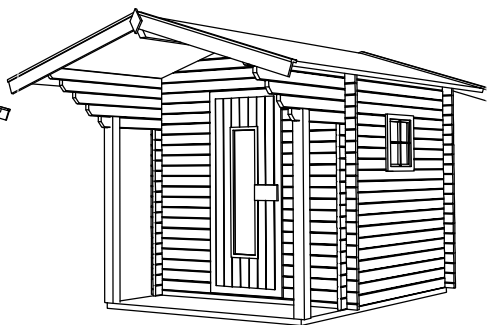
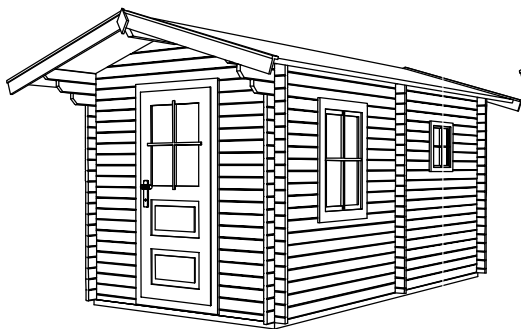
Wooden constructions for Sauna with door and metal screws, without any painting and impregnation.

Our producing sauna's wall thickness 44mm, 60mm or 70mm.

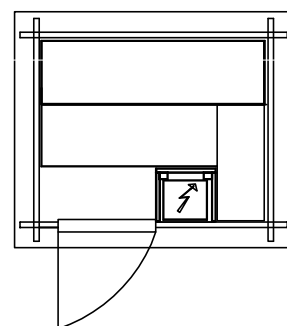
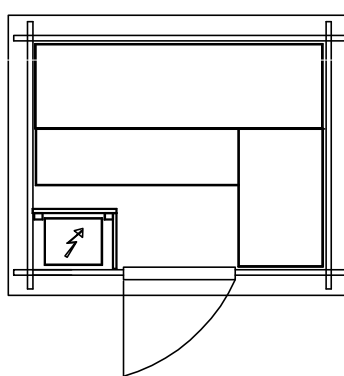
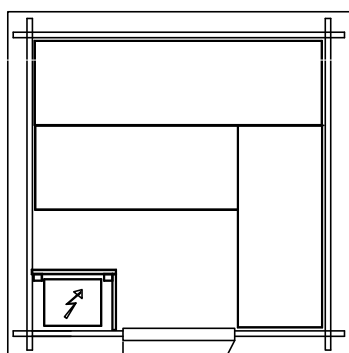
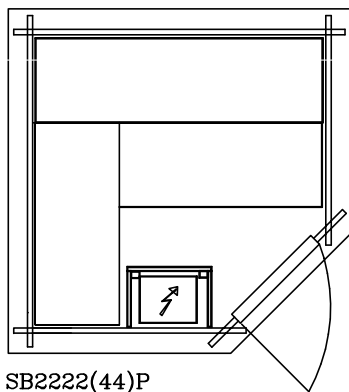
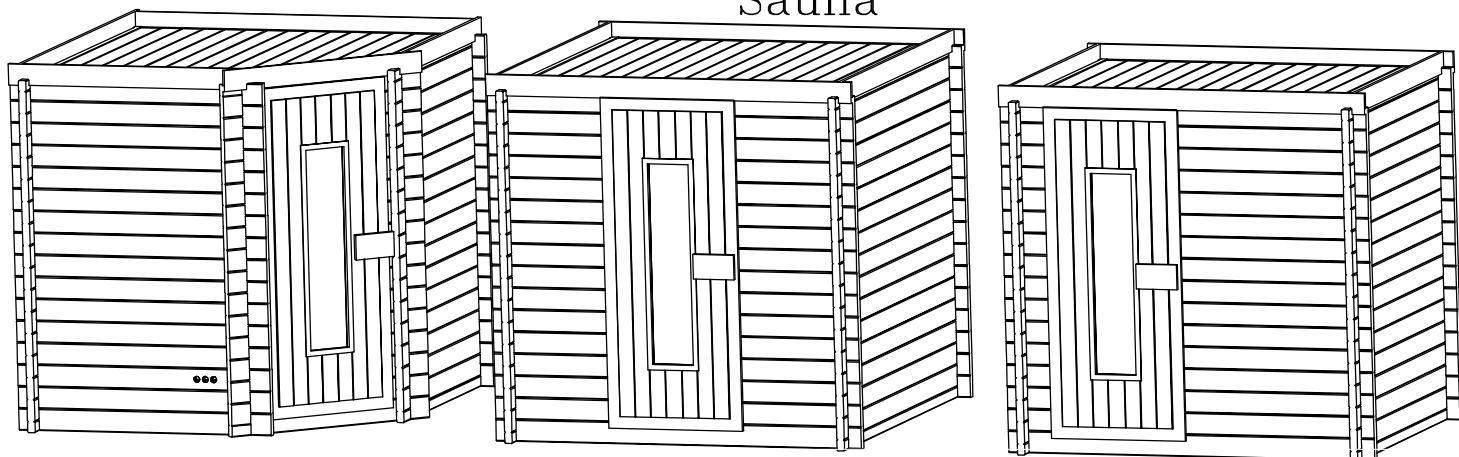
Sauna NSB2040(44)s6-I  
Sauna NSB2040(60)s6-I

Sauna NSB2020(44)s15  
Sauna NSB2020(60)s15

Sauna NSB5739(60)s5.6  
Sauna NSB5739(70)s5.6



## Sauna

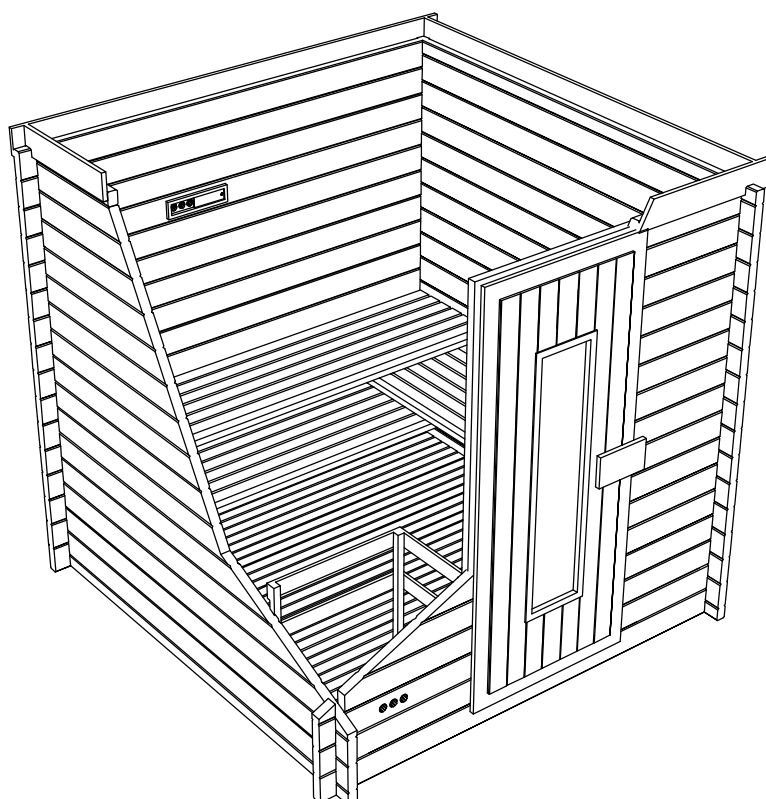


SB2222(44)P  
SB2020(44)P  
SB1919(44)P  
SB1818(44)P  
Wall thickness 35, 44 mm,  
Door with glasspacket,  
external dimensions:  
2.44\*2.44m  
2.29\*2.29m  
2.16\*2.16m  
2.00\*2.00m

SB2222(44)  
SB2020(44)  
SB1919(44)  
SB1818(44)  
Wall thickness 44 mm,  
Door with glasspacket,  
external dimensions:  
2.44\*2.44m  
2.29\*2.29m  
2.16\*2.16m  
2.00\*2.00m

SB1915(44)  
Wall thickness 44mm,  
Door with glass packet,  
external dimensions:  
2.16\*1.74m

SB1814(44)  
Wall thickness 44mm,  
door with glass packet,  
external dimensions:  
2,05\*1.61m



### Material

The walls, roof and floor made from pine or fir tree wood, the benches made from leaf-bearing tree wood.

### Door

The doors made from pine or fir tree wood with glass packet.

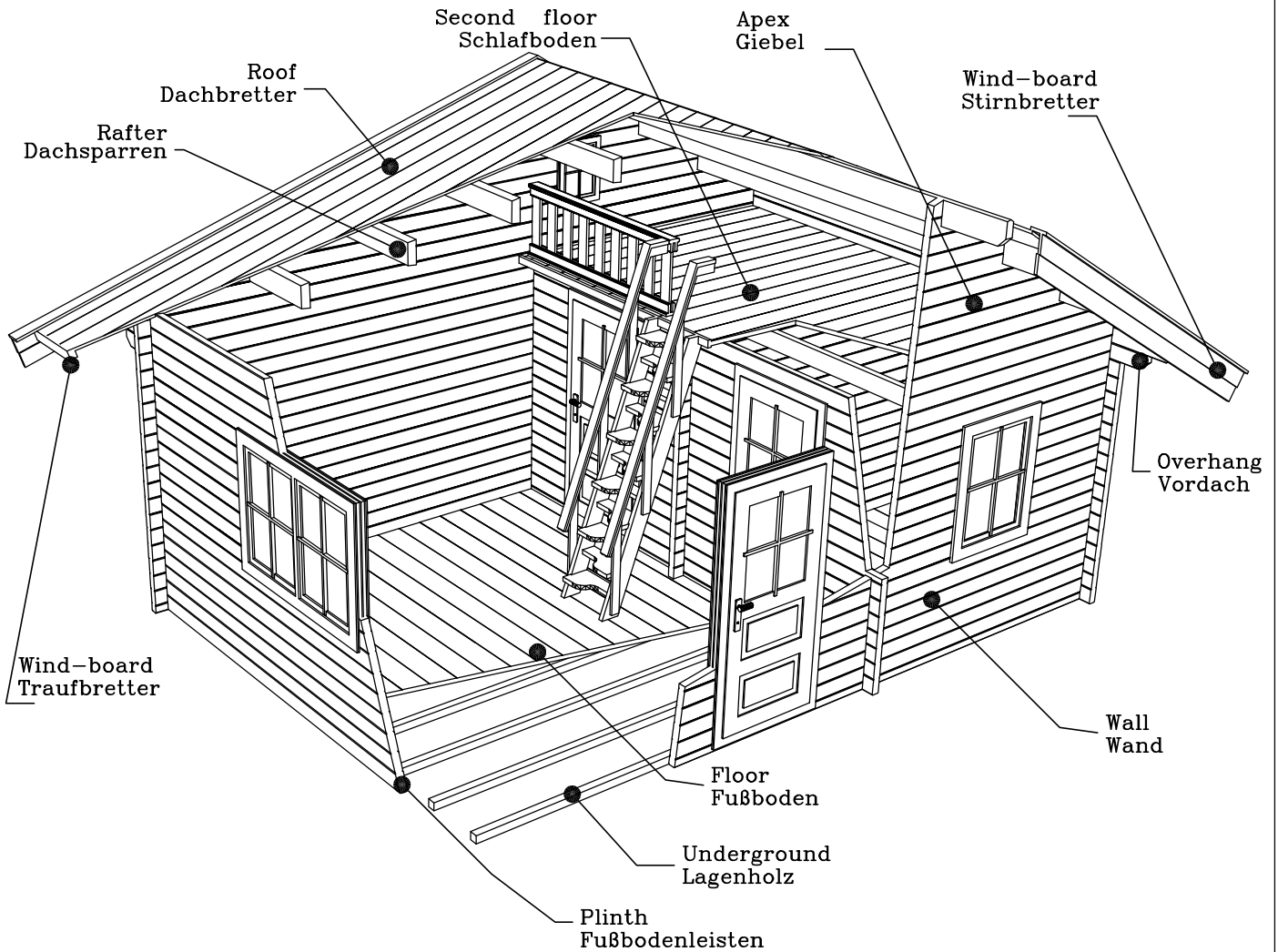
### Completion

Wooden constructions for Sauna with door and metal screws, without any painting and impregnation.

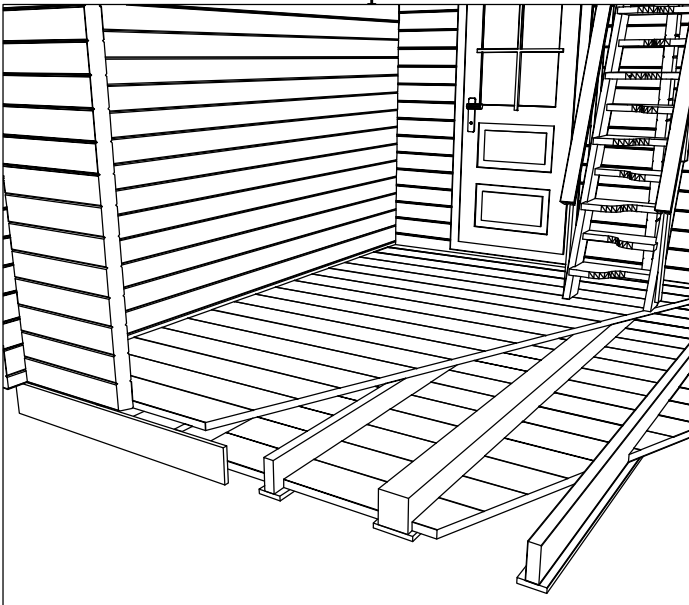
Our producing sauna's wall thickness 35mm, 44mm or 60mm.



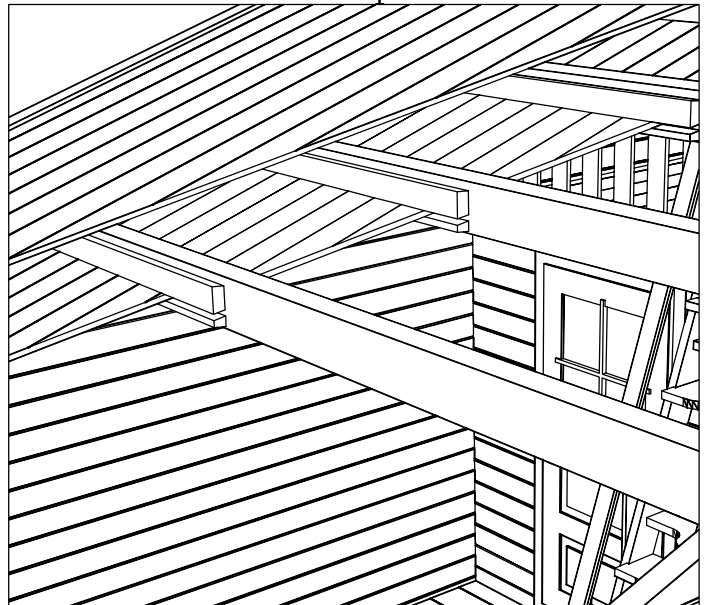
## LOG HOUSE CONSTRUCTION



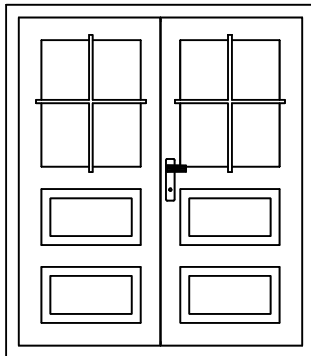
Double floor for special offer:



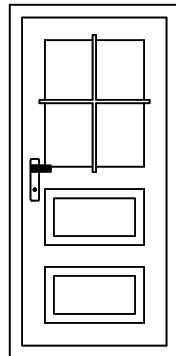
Double roof for special offer:



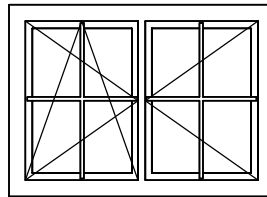
### Doors and Windows Standart package



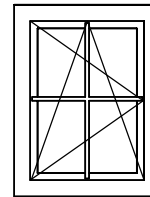
Double door 1615\*1940



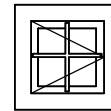
Door 850\*1940 right



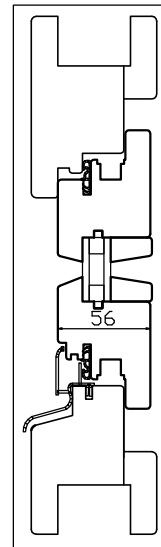
Double window with rotating and tilting  
1380\*980



Single window with rotating and tilting  
715\*980

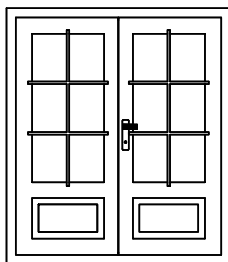


Single window opens to inside  
480\*480

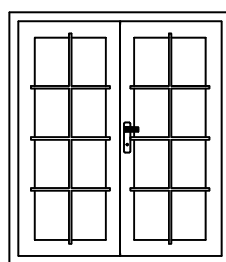


Doors and windows for all walls are with glass packets (double glazed).  
The type of window is EURO56.

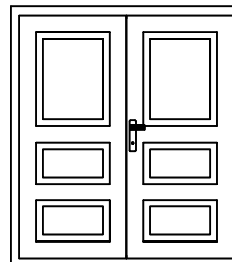
### Package for specials offers



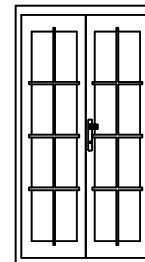
Double door with glass 2/3  
1615\*1940



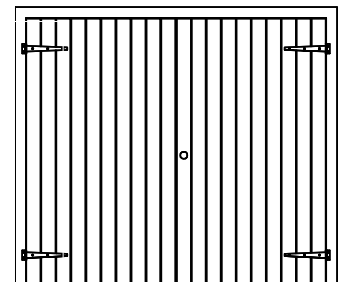
Double door full glass  
1615\*1940



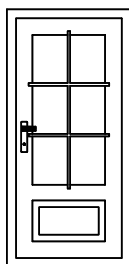
Double door full wood  
1615\*1940



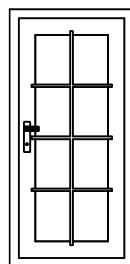
\*\*Double door full glass, tight  
1000\*1940



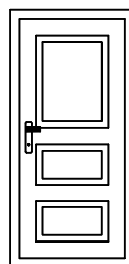
\*\*Garage door



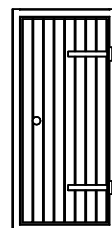
Doors with glass 2/3  
850\*1940



Door full glass  
850\*1940



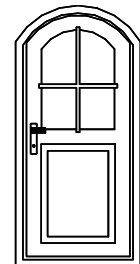
Door full wood  
850\*1940



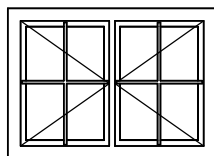
Annex door  
690\*1580



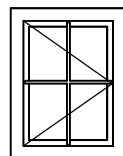
\*\*Sauna door  
690\*1800



\*\*Arched door  
850\*1880



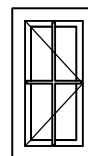
\*\*Double window opens to inside  
1380\*980



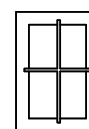
\*\*Single window opens to inside  
715\*980



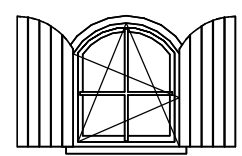
Single window with rotating and tilting  
480\*480



\*\*Single window opens to inside  
480\*980



\*\*Single window not opening  
480\*730

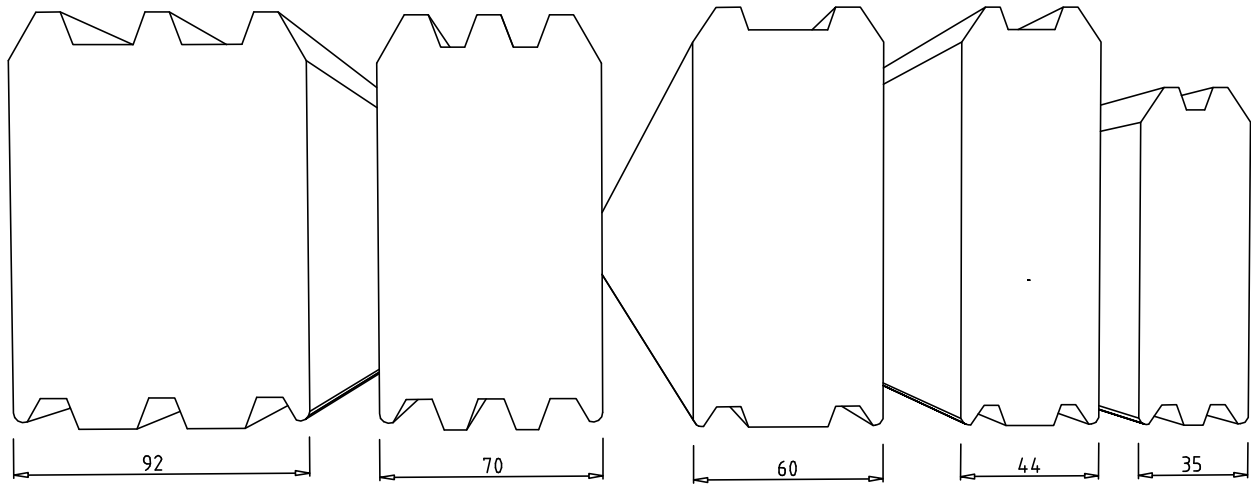


\*\*Arched single window with rotating and tilting

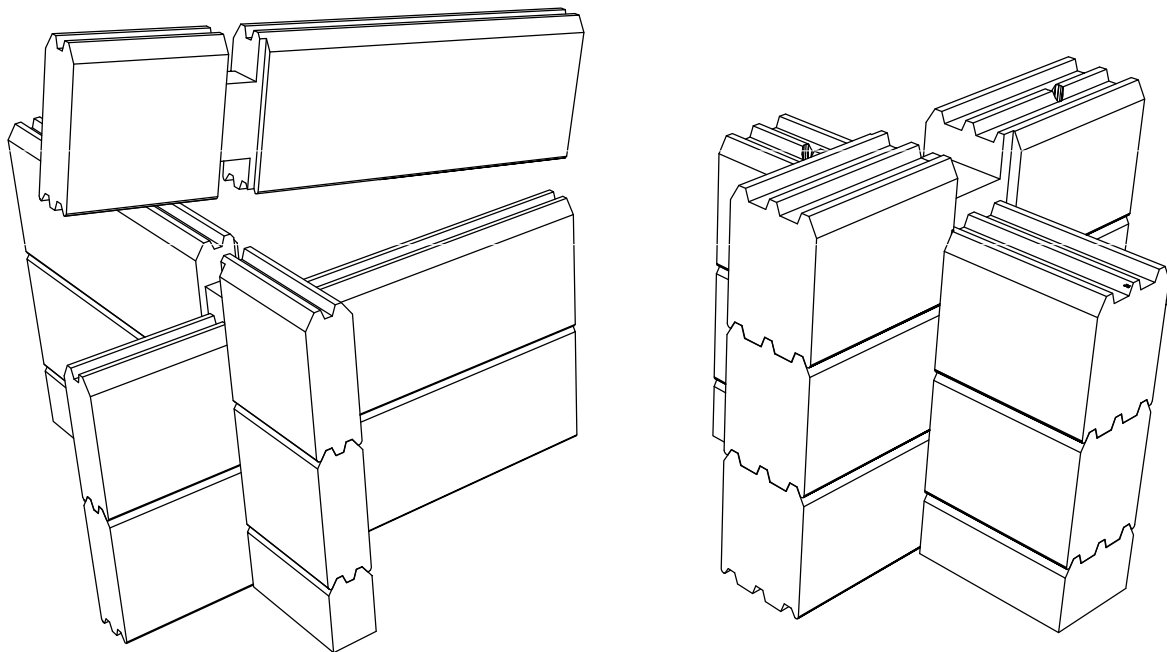
All windows can be with shutters

\*\* - Very specials offers

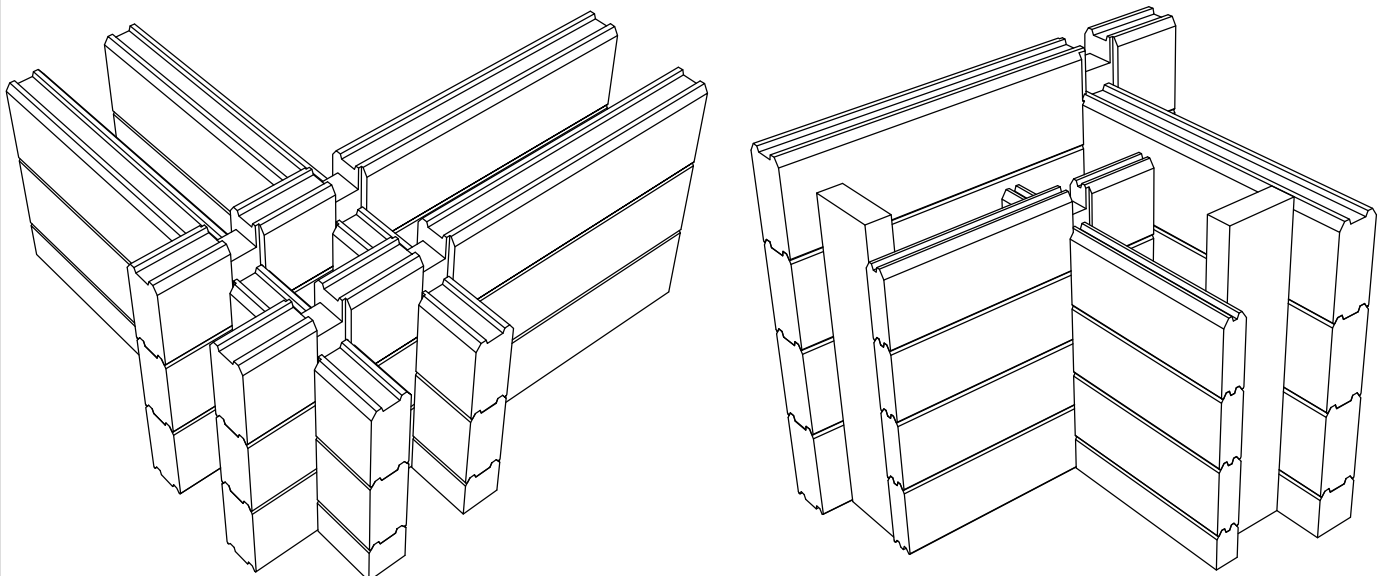
Wall profile



Single wall construction



Double wall construction







**GUODROS  
MEDIS**

# SAUNA JŪSU NAMAMS

Gamybos pagrindas-  
surenkami frezuotų  
sienų vasarnamiai,  
sodo nameliai, pavėsinės  
saunos, namai kempingams

## SIENOJAI

Gaminamų saunų sienų storiai  
35 mm, 44 mm, 60 mm, 70 mm,  
ir 92 mm. Sienojai gaminami iš  
šiaurinės eglės,  
suveržiami metaliniais strypais

## LANGAI IR DURYS

Gaminami naudojant  
grūdītą stiklą ar tonuotą  
apsauginį stiklo paketą

## SAUNOS GULTAI,

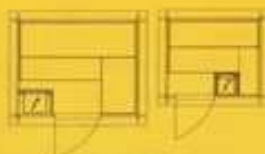
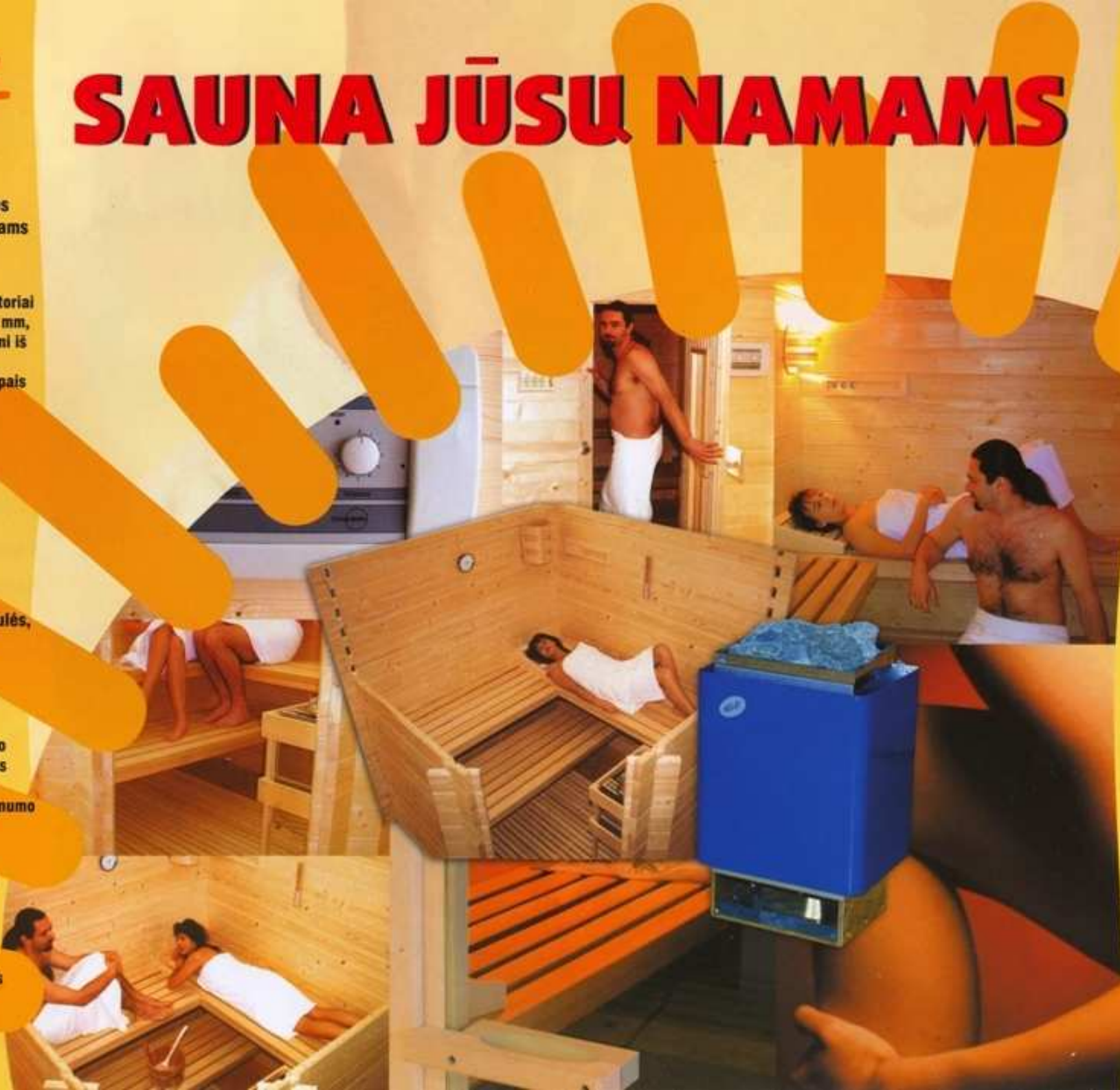
grindų grotelės,  
atlošai gaminami iš drebulės,  
liepos arba juodalksnio

## MEDIENOS DRĖGMĖ

Pagrindinė žaliava- dvigubo  
pjovimo lentos, džiovinamos  
konvekciniuose džiovinimo  
kamerose iki 10-12% drėgnumo

## VIDINĖ SAUNŲ ĮRANGA

Saunų krosnelės,  
termometrai,  
apšvietimo lempos  
komplektuojami  
pagal kliento pageidavimus



**GAMINAME PAGAL TIPINIUS  
PROJEKTUS IR PAGAL  
INDIVIDUALIUS UŽSAKYMUS**



**GUODROS  
MEDIS**

KALVARIJOS 28d  
LT-3018  
KAUNAS  
LIETUVA

TEL. +370 37 392835

FAKS. +370 37 392884

e-MAIL: [info@guodrosmedis.lt](mailto:info@guodrosmedis.lt)

[www.guodrosmedis.lt](http://www.guodrosmedis.lt)